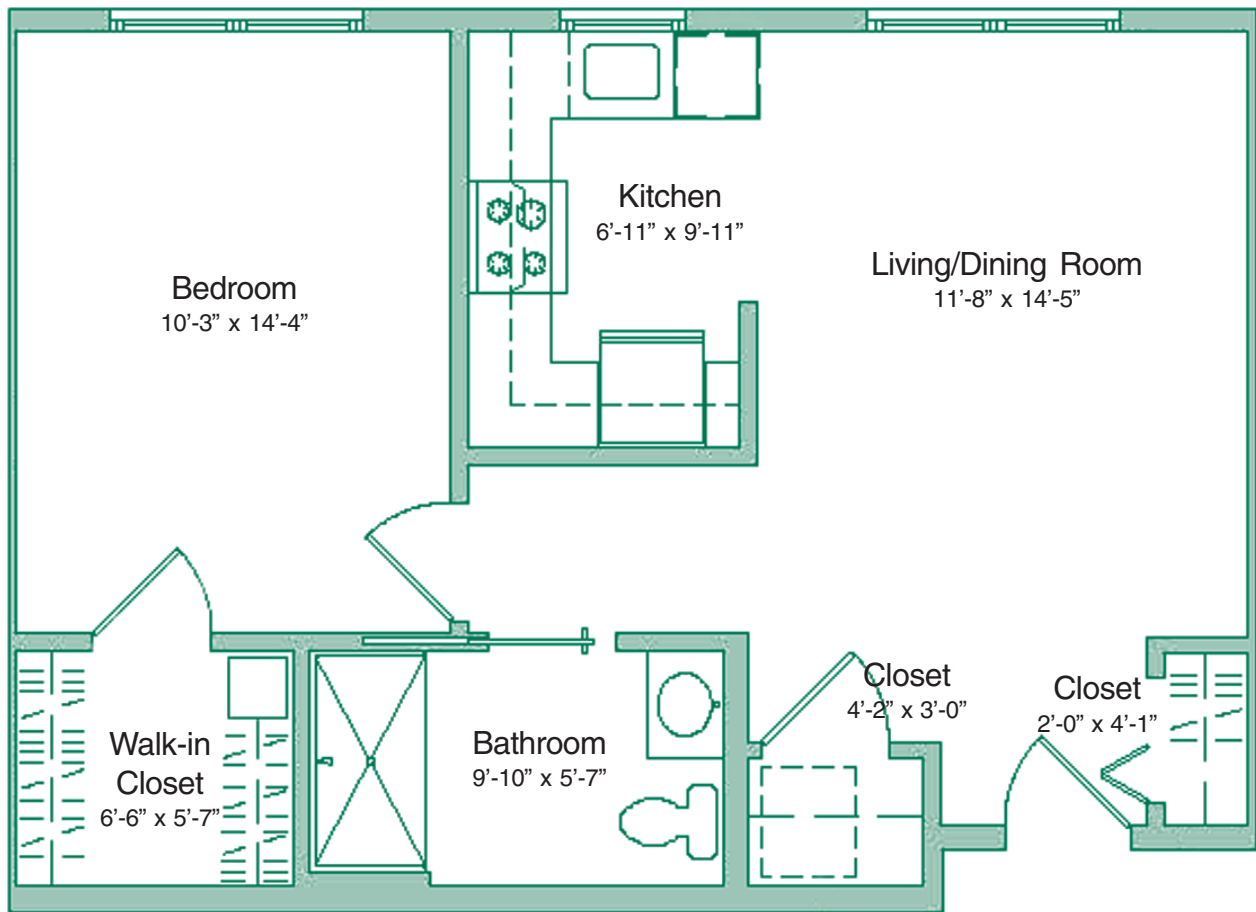


Pine Hill I



One-Bedroom

Approximate Area:
619 Square Feet

Hawthorne Ridge

30 Community Way, East Greenbush, NY 12061

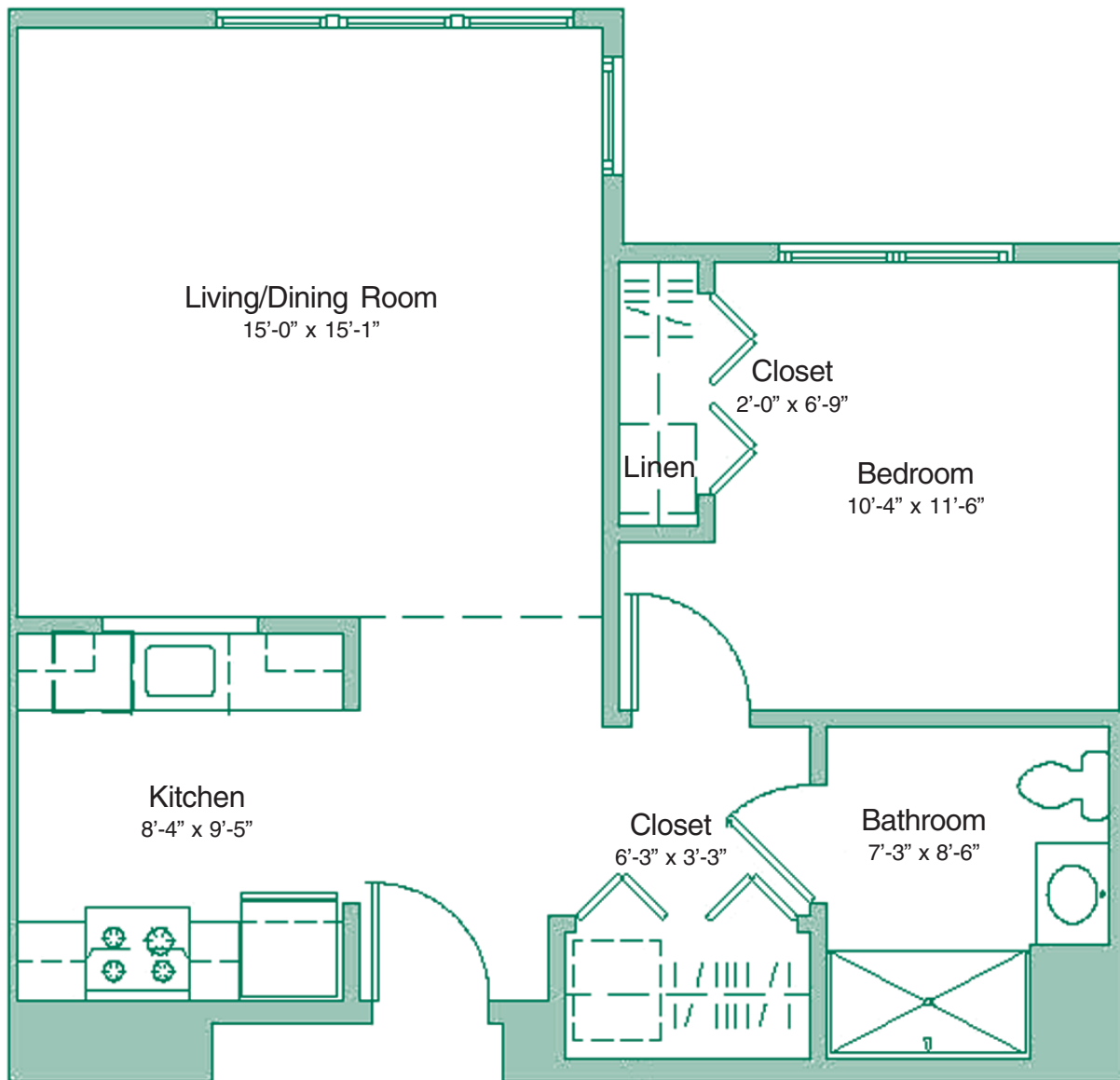
(518) 833-1111 • fax (518) 477-2906

www.NortheastHealth.com/HawthorneRidge



Hawthorne Ridge 

Pine Hill II



One-Bedroom

Approximate Area:
684 Square Feet

Hawthorne Ridge

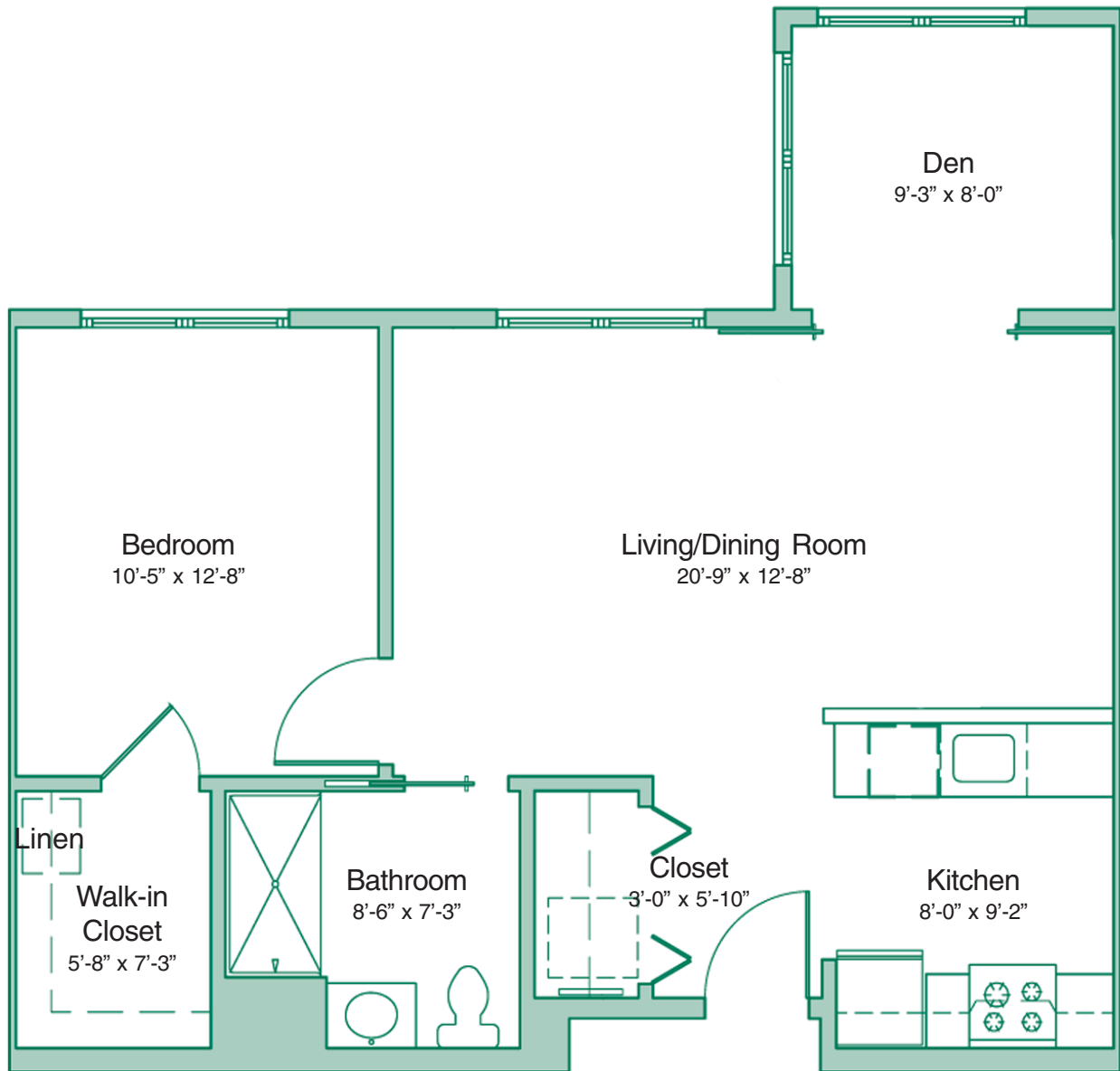
30 Community Way, East Greenbush, NY 12061

(518) 833-1111 • fax (518) 477-2906

www.NortheastHealth.com/HawthorneRidge



Mohican I



One-Bedroom with Den

Approximate Area:
754 Square Feet

Hawthorne Ridge

30 Community Way, East Greenbush, NY 12061

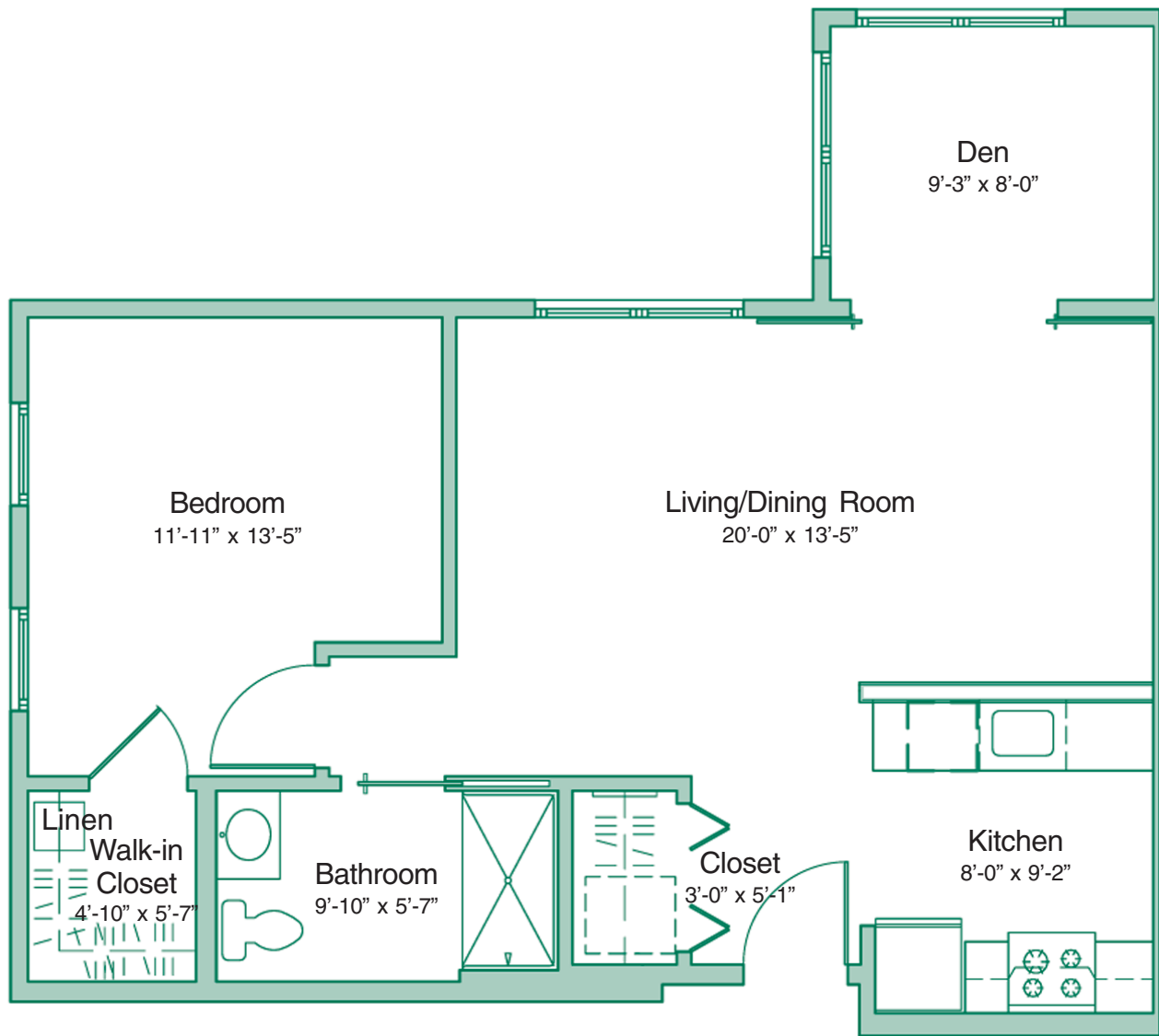
(518) 833-1111 • fax (518) 477-2906

www.NortheastHealth.com/HawthorneRidge



Hawthorne Ridge 

Mohican II



One-Bedroom with Den

Approximate Area:
759 Square Feet

Hawthorne Ridge

30 Community Way, East Greenbush, NY 12061

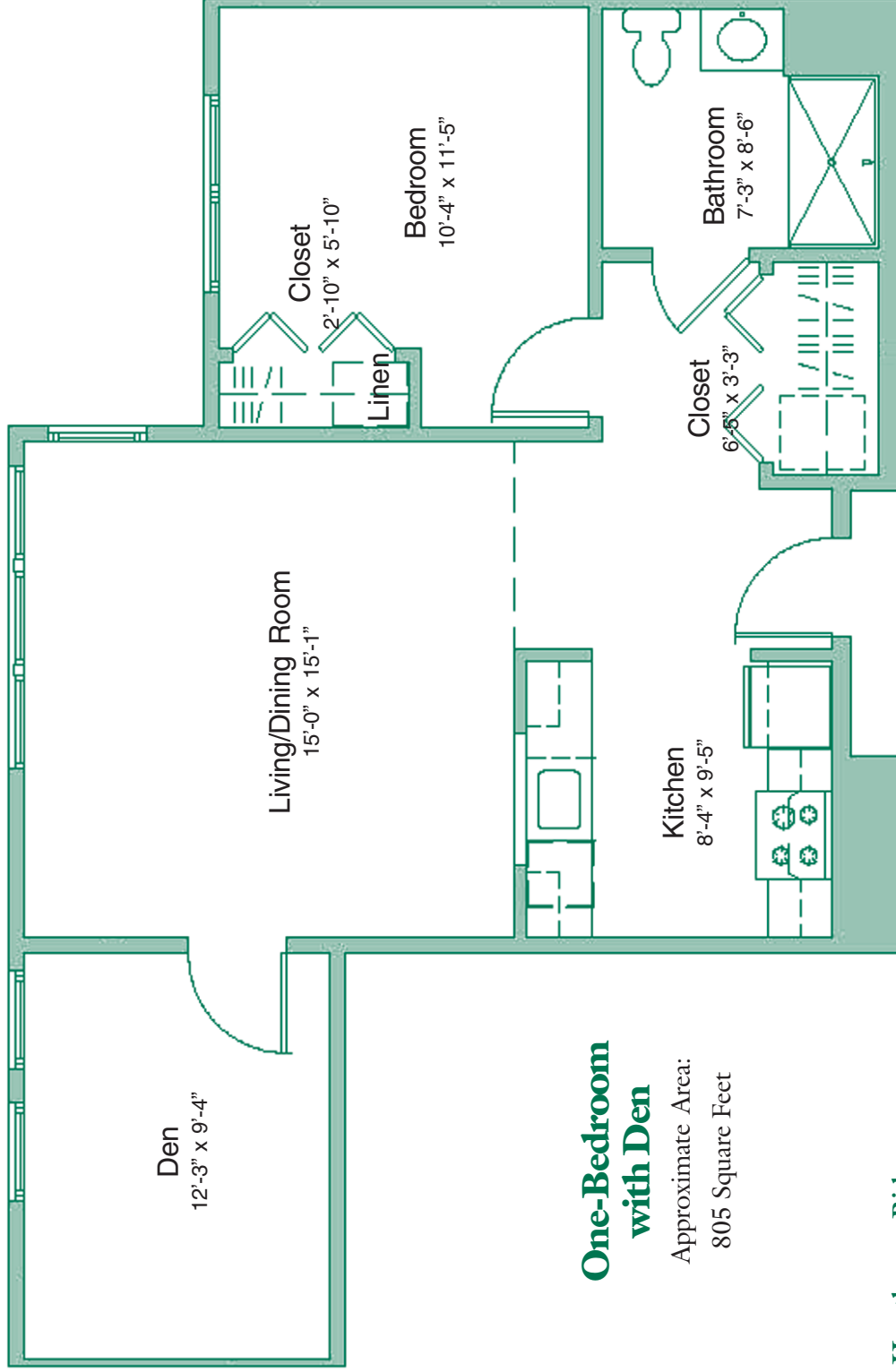
(518) 833-1111 • fax (518) 477-2906

www.NortheastHealth.com/HawthorneRidge



Hawthorne Ridge 

Mohican III

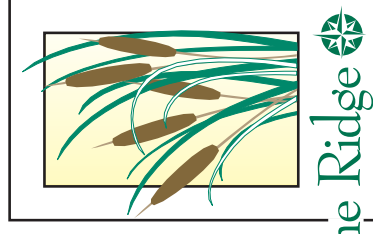


Hawthorne Ridge

30 Community Way, East Greenbush, NY 12061

(518) 833-1111 • fax (518) 477-2906

www.NortheastHealth.com/HawthorneRidge



Hawthorne Ridge

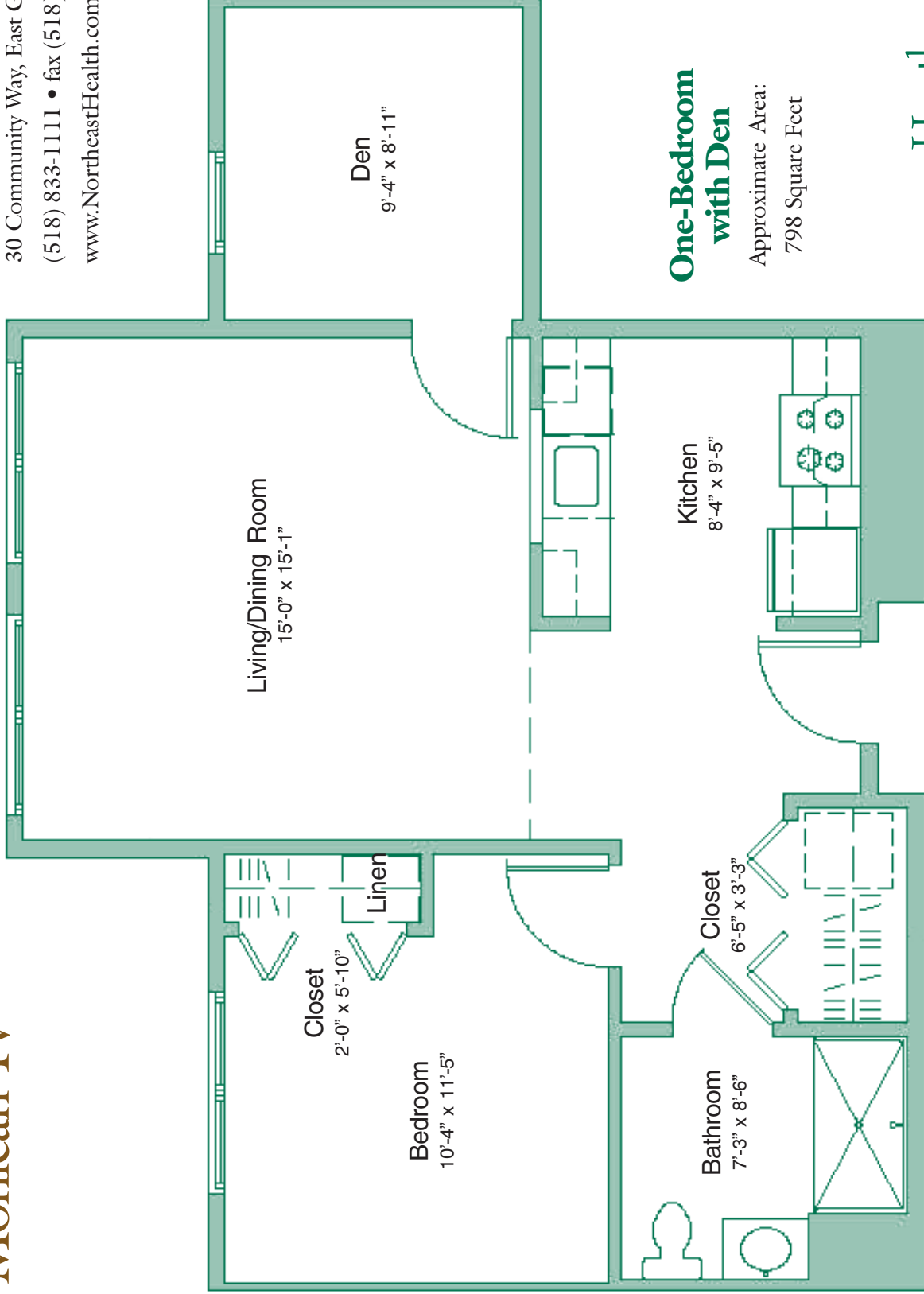
Mohican IV

Hawthorne Ridge

30 Community Way, East Greenbush, NY 12061

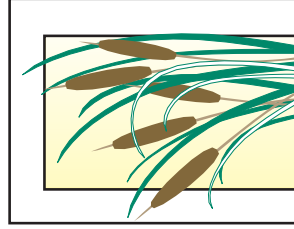
(518) 833-1111 • fax (518) 477-2906

www.NortheastHealth.com/HawthorneRidge



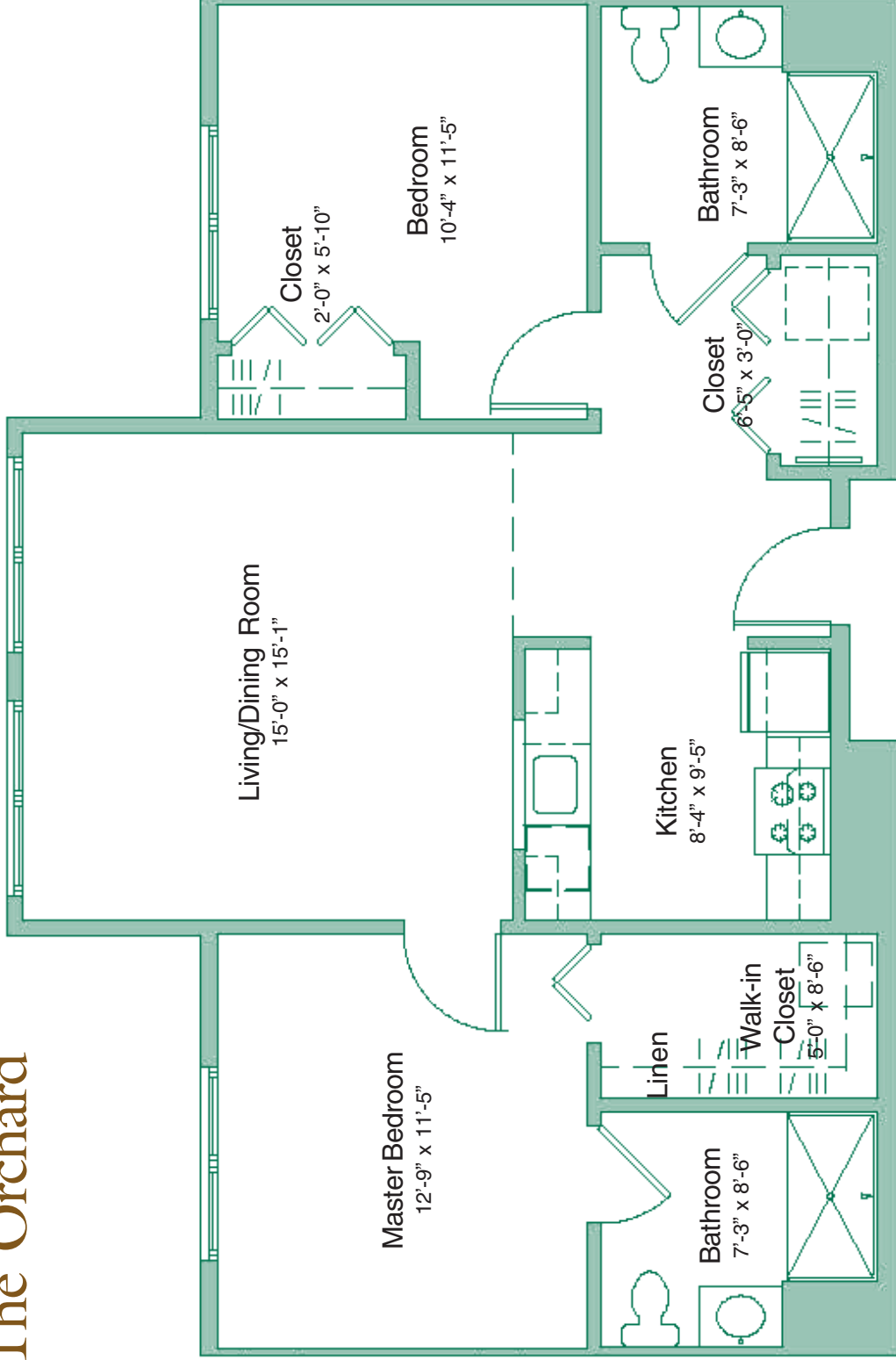
One-Bedroom with Den

Approximate Area:
798 Square Feet



Hawthorne Ridge 

The Orchard



Hawthorne Ridge

30 Community Way, East Greenbush, NY 12061

(518) 833-1111 • fax (518) 477-2906

www.NortheastHealth.com/HawthorneRidge

Two-Bedroom

Approximate Area:

951 Square Feet

