

# BEECHWOOD

Good decisions lead here.



Beechwood

# Welcome to Beechwood

*Congratulations on  
taking the next step to  
plan ahead for  
your future!*



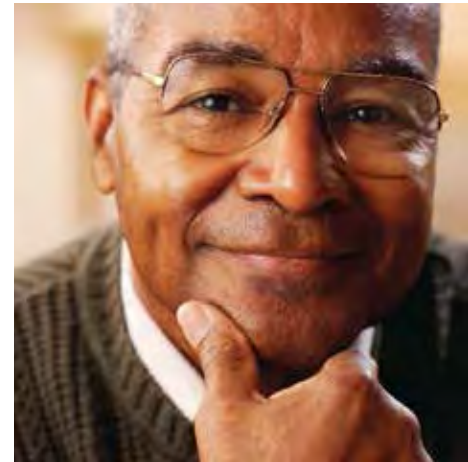
We hope you find the enclosed materials a valuable reminder of all the benefits of life at Beechwood and why it could be one of the smartest decisions you ever make. It is a pleasure to introduce you to our extraordinary community – the area’s first to offer a full continuum of care on site. It’s our goal to help you understand your options and guide you on the journey to a more fulfilling, secure retirement.

As you review the information, please let us know if you have any questions that we can answer. Or, call to schedule a time to visit and get more acquainted with with our close-knit community of friendly neighbors.

[www.EddySeniorLiving.com/Beechwood](http://www.EddySeniorLiving.com/Beechwood) | 518-274-9890



# The Beechwood Lifestyle



*There's life... And then there's LIFE at Beechwood.*

At Beechwood, you'll find our priority is YOU: physically, emotionally, intellectually, and spiritually. Maintenance-free residences give you the time to engage in the activities you please. Social opportunities encourage fellowship and close relationships with neighbors and staff. Continuing education classes keep you learning and growing in ways you never imagined. And variety adds more spice to life – with chef-prepared meals to satiate your culinary tastes and ample opportunities to stay fit, challenged, well and strong. Plus a full continuum of care on site provides peace of mind – knowing a helping hand is always close by, if you need it.

*See for yourself, and change your outlook on the future.*

[www.EddySeniorLiving.com/Beechwood](http://www.EddySeniorLiving.com/Beechwood) | 518-274-9890



# Independent Living at Beechwood

*Freedom to live, Room to grow.*

Ready to trade in your mower and snow shovel for a life of greater fulfillment, convenience and independence? At Beechwood, all of our residences are maintenance-free and provide access to a wide array of life-enriching activities and amenities right outside your door. Choose from one or two-bedroom floor plans, designed with your active lifestyle and sensible tastes in mind.



## *Services:*

- Interior & exterior maintenance of apartments, grounds & parking areas (including trash and snow removal)
- Monthly housekeeping, semi-annual window washing & air filters, and annual carpet cleaning
- Property taxes & utilities (water, electric heat, and air conditioning)
- Digital cable, local & long distance telephone, & wireless internet
- 24-hour security & emergency call system
- Smoke detectors & sprinkler system
- One meal daily in the dining room / casual dining options available
- Regularly scheduled transportation
- Social, cultural & volunteer activities – Artist Series, Spectrum8 Theatre, Albany Institute of History and Art, Sand Lake Theatre, Rockwell Museum, Clark Museum, Troy Music hall, Albany Symphony, MacHaydn Theatre, JP Cruise, Bennington Center for the Arts, Roosevelt Library, SPAC (Saratoga Performing Arts Center)



## *Signature Wellness Program:*

EmpowerU Nutrition & Wellness Connection

- Monthly classes, personal fitness counseling & training sessions
- Fitness programs focused on balance/agility, strength, flexibility & cardio endurance
- Yoga Classes
- Wellness Center with fitness equipment (treadmill, recumbent stepper & cycle)
- YMCA Membership & pool access
- Beechwood “Solemates” Walking Club

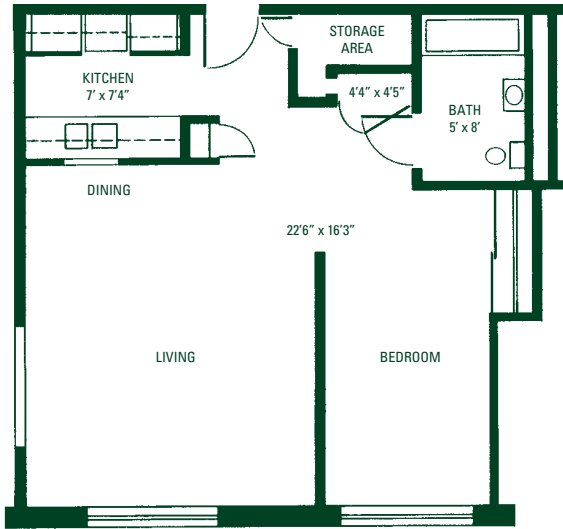
## *Amenities:*

- Libraries on each floor
- On-site storage
- Putting green
- Private meeting rooms
- Guest suites
- Walking path
- Full-service beauty/barber shop
- Gift shop for light snacks & sundries
- Religious services
- Dining room
- Cafe



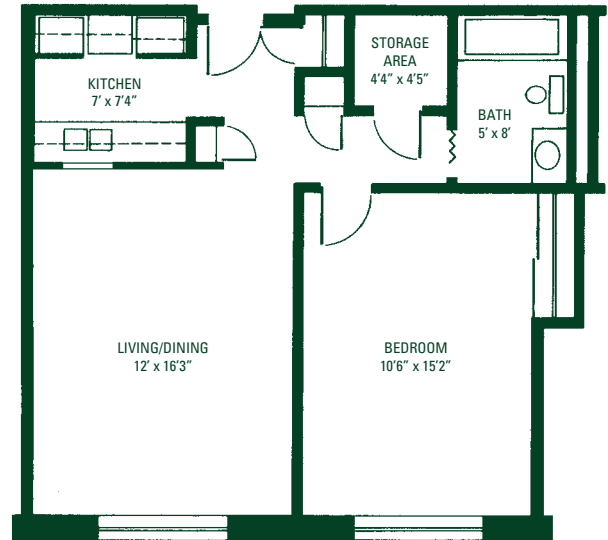
# Floorplans

## The Willard - One Bedroom (A)



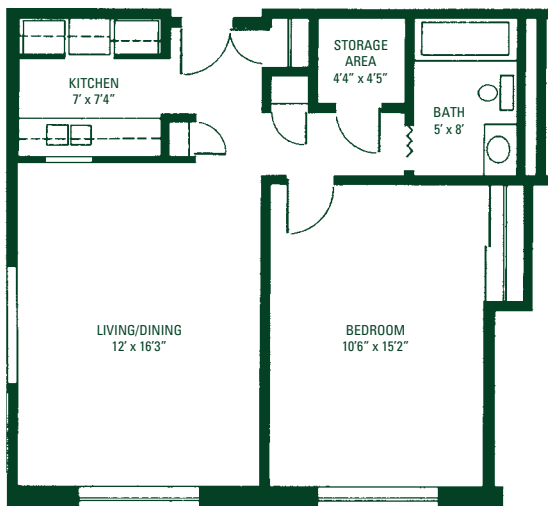
514 square feet

## The Pattison - One Bedroom (B)



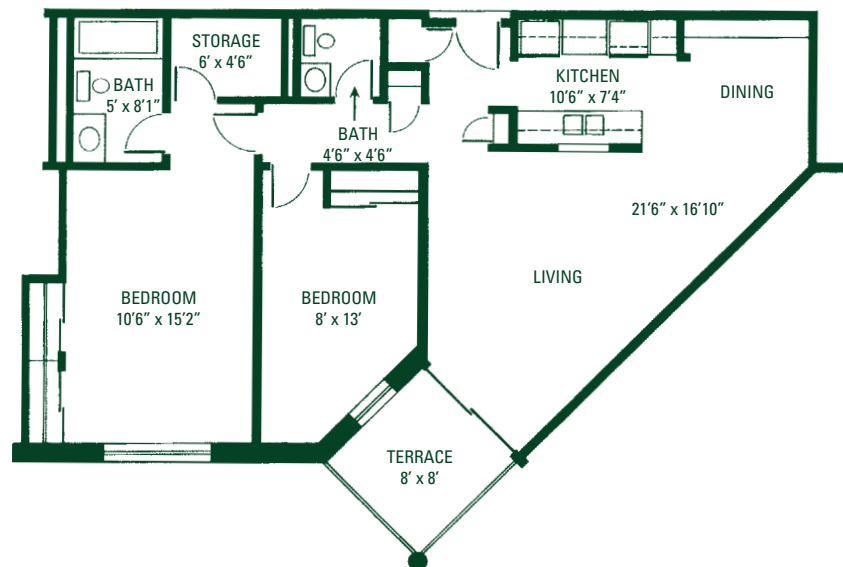
555 square feet

## The Cluett - One Bedroom Corner (B)



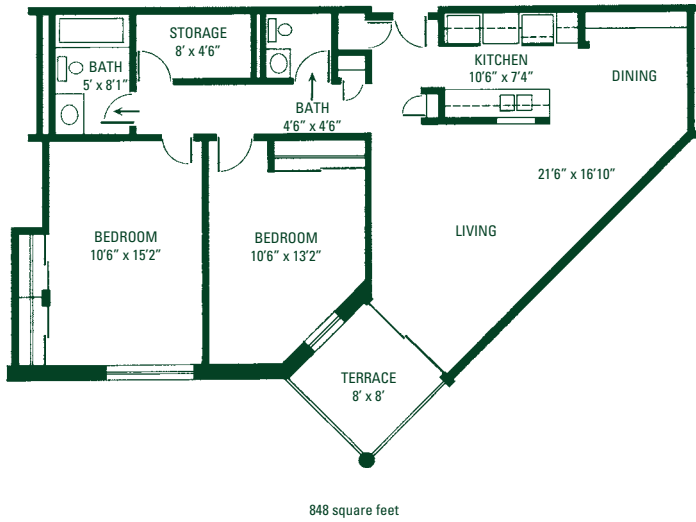
555 square feet

## The Garfield- One Bedroom with Den (C)

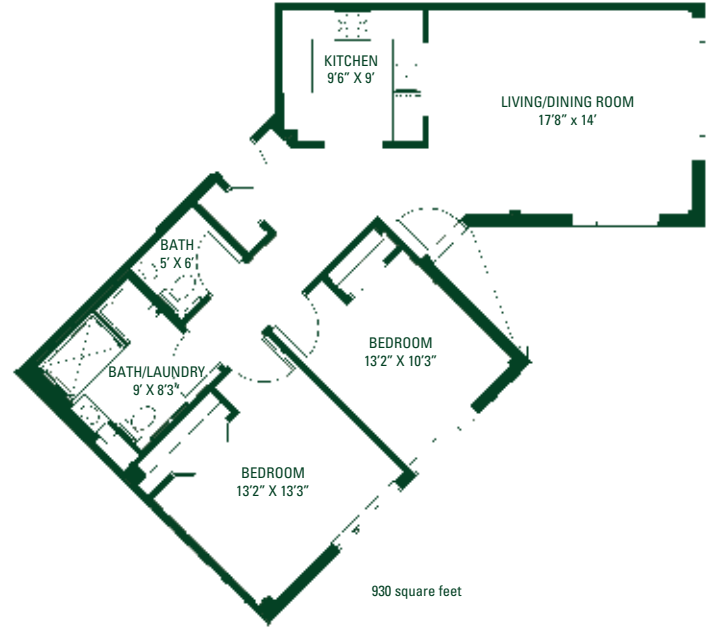


807 square feet

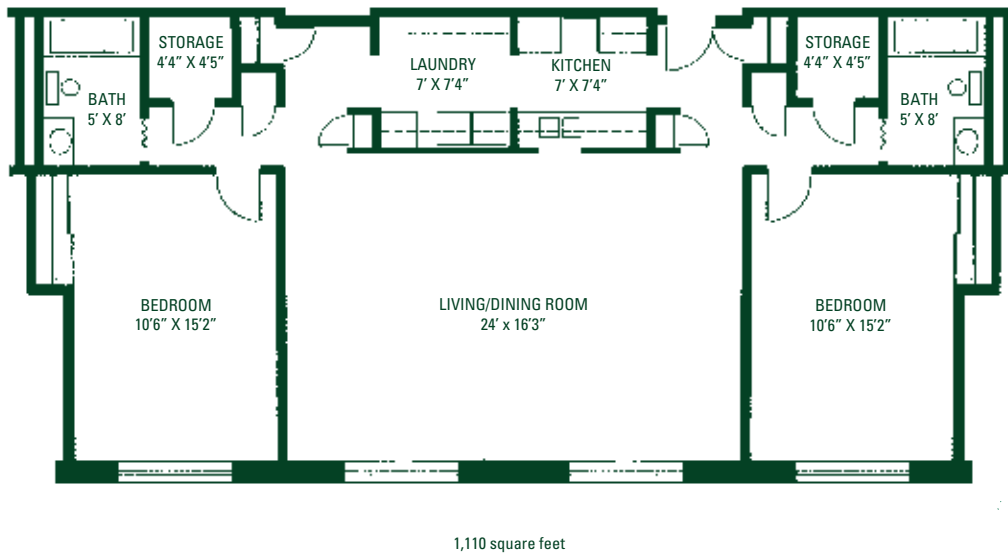
### The Poestenkill - Two Bedroom (D)



### The Rensselaer - Two Bedroom (E)



### The Van Buren - Two Bedroom (F)



# Compare Your Present Living Costs with Beechwood Independent Living

	Your Current Monthly Expenses	Monthly Service Fee
Monthly Mortgage or Rent	\$ _____	\$ _____
Building Insurance	_____	Included
Property Tax	_____	Included
Heat	_____	Included
Electricity	_____	Included
Sewer and Water Fees	_____	Included
Recycling/ Refuse Removal	_____	Included
Snow Removal/Yard Care	_____	Included
Scheduled Housekeeping	_____	Included
Home Maintenance	_____	Included
24-hour Security Services	_____	Included
Transportation	_____	Included
Local & Long Distance Telephone Service	_____	Included
Cable TV	_____	Included
High Speed Internet	_____	Included
Grocery/Dining Out	_____	Included*
Wellness Program	_____	Included
On-site Parking	_____	Included
Office Center (Copier, fax, shredder)	_____	Included
On-site Storage	_____	Included
Smoke Detectors & Sprinkler System	_____	Included
Social & Cultural Events	_____	Included
YMCA Membership	_____	Included
Totals	\$ _____	\$ _____

\*One meal daily in the dining room included / casual dining options available





# The Terrace at Eddy Memorial

## *Comfort in a Helping Hand.*

Sometimes you need a little help with things people often take for granted. At Beechwood, we call this enriched housing – additional support with TLC – and, in Troy, nobody provides it better than The Terrace at Eddy Memorial. From help with bathing, dressing and assistance with medications, The Terrace offers you the assurance of personalized care in a warm, friendly atmosphere designed to meet your changing needs.

The greatest comfort for Beechwood residents is being a part of Eddy Senior Living and St. Peter's Health Partners family – a close-knit community that genuinely cares.





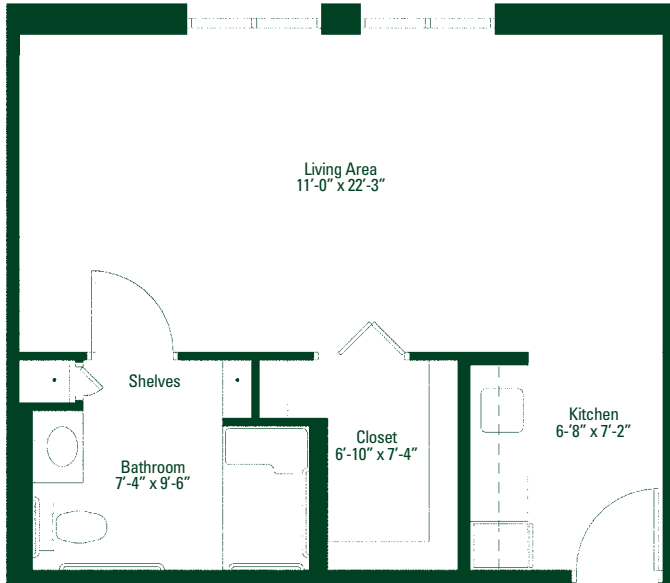
### *Services & Amenities:*

- Three chef-prepared meals served daily
- Assistance with daily activities, such as bathing and dressing
- Assistance with medications
- 24-hour security & emergency call system
- Licensed nursing staff & resident care assistants
- Daily resident safety checks, bed-making & trash removal
- Scheduled transportation
- Social activities, cultural, recreational & educational programs
- Exercise & wellness program
- Housekeeping, laundry & linen services weekly
- Residence & grounds maintenance
- Utilities (water, electric and air conditioning)
- Digital cable, local and long distance telephone, and wireless internet
- Attractively designed private studios and one-bedroom residences
- Beautifully landscaped grounds & courtyards with raised gardens
- Tastefully decorated dining room & activities centers, common areas, library, living rooms
- Gift shop for light snacks & sundries\*
- Full-service beauty/barber shop\*
- Religious services\*

\*Shared with Beechwood Independent Living.

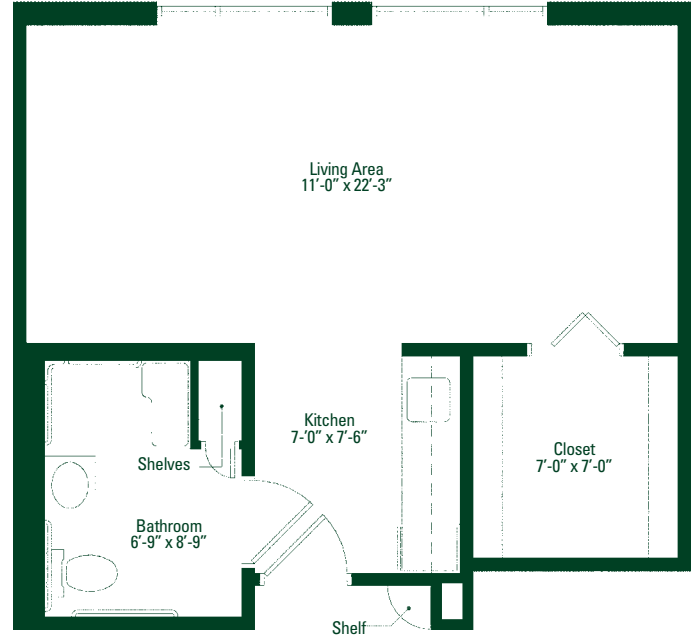
# Floorplans

## The Balsam



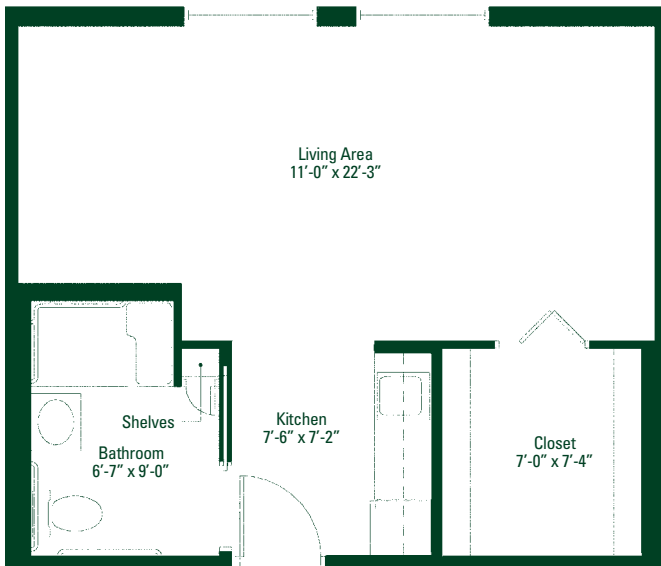
Approximate Area - 405 sq. ft.

## The Willow



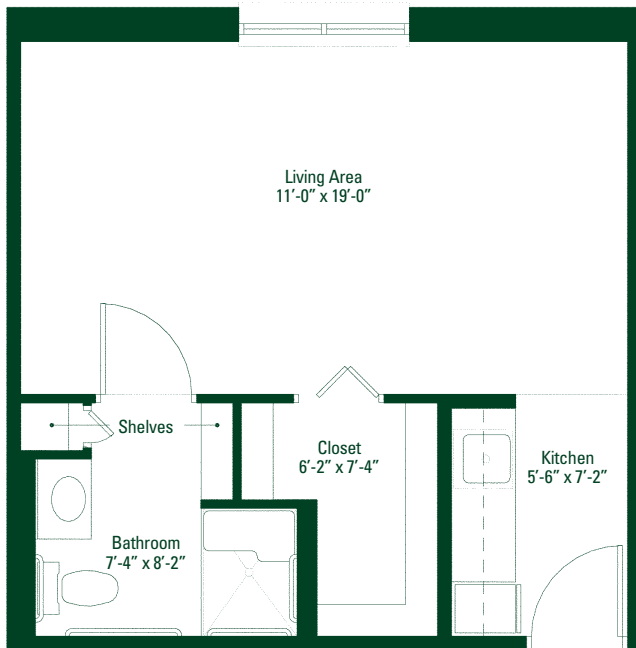
Approximate Area - 415 sq. ft.

## The Spruce



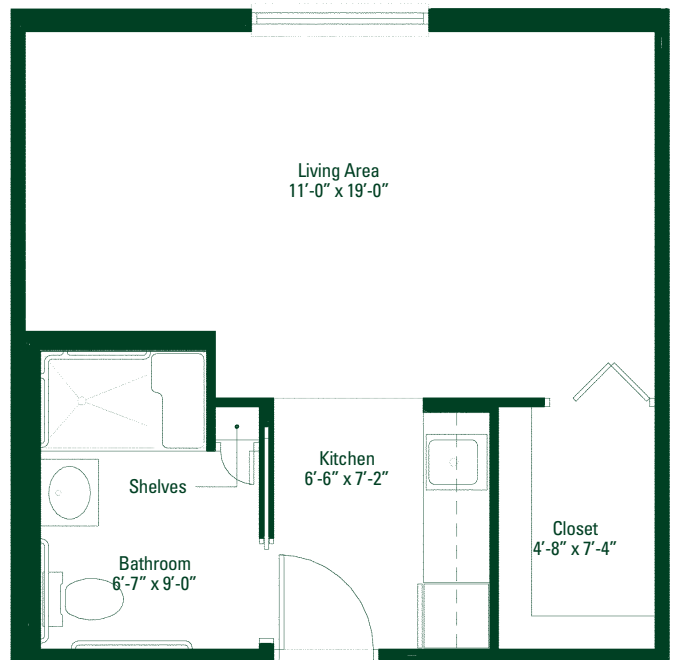
Approximate Area - 400 sq. ft.

## The Birch



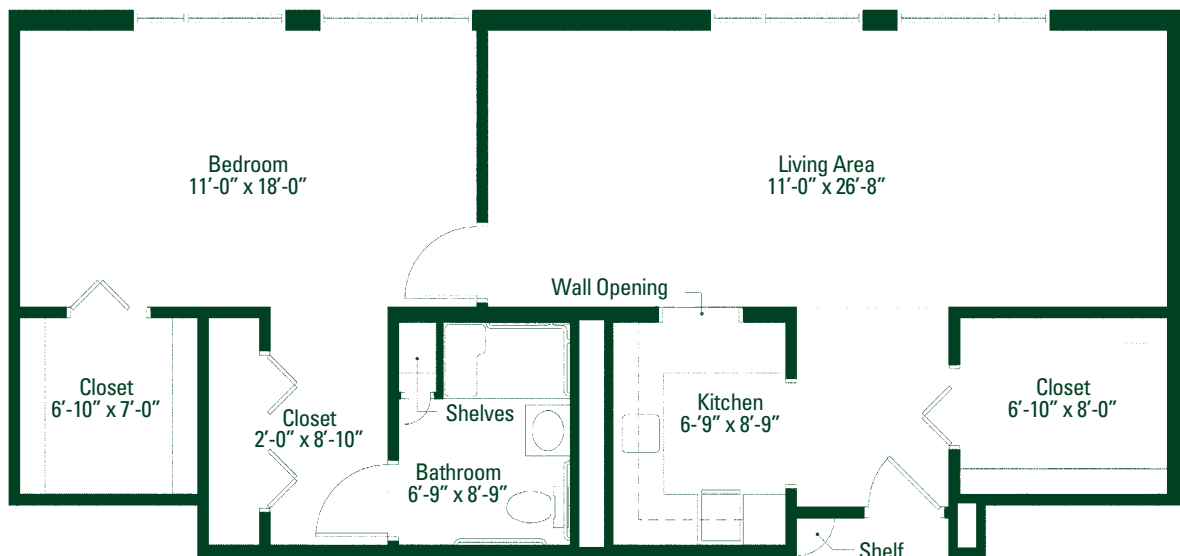
Approximate Area - 345 sq. ft.

## The Maple



Approximate Area - 340 sq. ft.

## The Oak



Approximate Area - 860 sq. ft.



# Compare Your Present Living Costs with The Terrace Enriched Housing

	Your Current Monthly Expenses	Monthly Service Fee
Monthly Mortgage or Rent	\$ _____	\$ _____
Building Insurance	_____	Included
Property Tax	_____	Included
Heat	_____	Included
Electricity	_____	Included
Sewer and Water Fees	_____	Included
Recycling/ Refuse Removal	_____	Included
Snow Removal/Yard Care	_____	Included
Scheduled Housekeeping	_____	Included
Home Maintenance	_____	Included
24-hour Security Services	_____	Included
Transportation	_____	Included
Local Telephone Service	_____	Included
Long Distance Telephone Service	_____	Included
Cable TV	_____	Included
High Speed Internet	_____	Included
Grocery/Dining Out	_____	Included
Emergency Call System	_____	Included
Professional Health Aids	_____	Included
Medication Assistance	_____	Included
On-site Parking	_____	Included
Smoke Detectors & Sprinkler System	_____	Included
Social & Cultural Activities	_____	Included
Totals	\$ _____	\$ _____

