

# BEVERWYCK

Distinctively different. Distinctively yours.



Beverwyck

# Welcome to Beverwyck

*Congratulations on  
taking the next step to  
plan ahead for  
your future!*



We hope you find the enclosed materials a valuable reminder of all the benefits of life at Beverwyck and why it's such an extraordinary place for you and your loved ones to explore. It is a pleasure to introduce you to our one-of-a-kind community and help you discover the standard of living here that includes top-notch services, personalized programming and incomparable peace of mind that comes with having access to a full continuum of care on site.

As you review the information, please let us know if you have any questions that we can answer.

[www.EddySeniorLiving.com/Beverwyck](http://www.EddySeniorLiving.com/Beverwyck) | 518-451-2103





# The Beverwyck Lifestyle



## *A standard of distinction*

At Beverwyck, you'll find our priority is YOU: physically, emotionally, intellectually, and culturally. Elegantly-appointed residences ensure comfort beyond measure. Maintenance-free services give you the time to engage in the activities you please. Social and cultural events bring you closer to friends and neighbors. Opportunities to volunteer make your community a better place. Educational opportunities abound to keep you learning and growing in ways you never imagined. And, variety adds more spice to life – with chef-prepared meals to satiate your culinary tastes and ample opportunities to stay fit, fulfilled and strong. Our care continuum adds a whole new standard of security should your needs change.

*See for yourself. And enjoy a standard of living as distinguished as your own.*

[www.EddySeniorLiving.com/Beverwyck](http://www.EddySeniorLiving.com/Beverwyck) | 518-451-2103



# Independent Living at Beverwyck

*Peace of Mind to Live Carefree. Personalized Services to Grow.*

Ready to trade in your mower and snow shovel for a life of greater fulfillment, convenience and independence? At Beverwyck, all of our residences are maintenance-free and provide gorgeous views of the surrounding landscape and a full spectrum of life-enriching opportunities outside your door. Choose from a generous selection of one and two-bedroom apartments and expansive cottages – designed exclusively with your tastes for quality in mind.



## *Service & Features:*

- Interior and exterior maintenance of residences, grounds and parking areas (including trash and snow removal)
- Monthly housekeeping, semi-annual window washing and annual carpet cleaning
- Property taxes and utilities\* (water, electric, heat and air conditioning)
- Digital cable, local and long distance telephone, and wireless internet
- 24-hour security and emergency call system
- Smoke detectors and sprinkler system
- Flexible dining options included in the formal, casual and private venues
- Regularly scheduled transportation
- Exciting calendar of social, cultural, educational and volunteer opportunities
- Innovative programming with a trained Resident Service Advisor (RSA), who serves as a personal liaison for each resident and connects them to valuable resources and services outside the community

\* Cottage residents have slightly different services.

### *Amenities:*

- Van Cortlandt room – featuring cultural events, concerts, games, religious services & entertainment
- Library with extensive book collection
- Communications/media center/computers
- Terrace lounge
- Art studio
- Fitness/Wellness Center
- On & off-site storage
- Yankee workshop
- Private meeting rooms
- Guest suites
- Garages
- Putting green
- Shuffleboard
- Billiards
- Community garden
- Extensive walking trails
- Full-service beauty/barber shop
- Gift shop for light snacks & sundries



### *Dining:*

- Chef-prepared meals served in our fine, casual & private dining
- Dinner daily in the elegant Normanskill Dining Room
- Beverwyck Café, offering complimentary continental breakfasts, soup & sandwich lunches, & made-to-order meals
- Professionally-trained wait staff providing a consistently distinctive dining experience
- "Under-the-tent" outdoor dining
- Private dining room for entertaining, special occasions or group dinners
- Catering services
- Meal delivery to residences available
- Chef's table, "eat local" menu, Diner Days & Superfoods Table
- Themed seasonal menus, Farmer's Markets & Holiday Pie Sales
- Many sustainable foods offered & only house-made menu items with no pre-packaged or prepared foods
- "Hydration Stations" throughout the campus
- A commitment to Platinum Service®

## *Signature Wellness Program:*

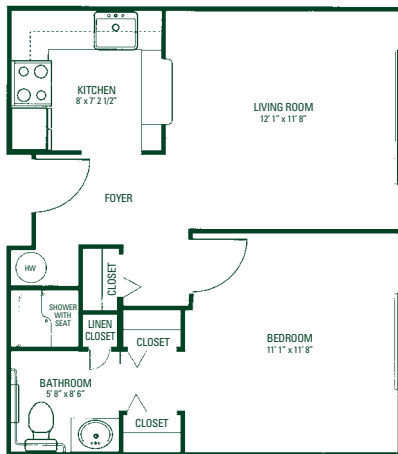
### EmpowerU Nutrition & Wellness Connection

- Indoor Aquatic Center
  - Attached to the Community's main entrance
  - Offers residents a year-round aquatic program
  - Features a heated lap pool & separate twelve-person hot tub
  - Easy-access low-grade stairs for pool entry
  - Aquatic classes of varying impact & difficulty- from beginner to advanced
- Personal fitness counseling & training sessions
- Fitness programs focused on balance/agility, strength, flexibility & cardio endurance
- Yoga classes
- Aerobics
- Walking groups
- Wellness Center with fitness equipment (treadmill, recumbent stepper & cycle)
- Nutrition & wellness lectures & classes

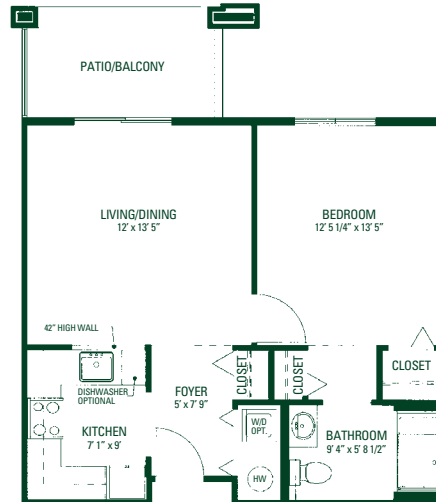


# Floorplans

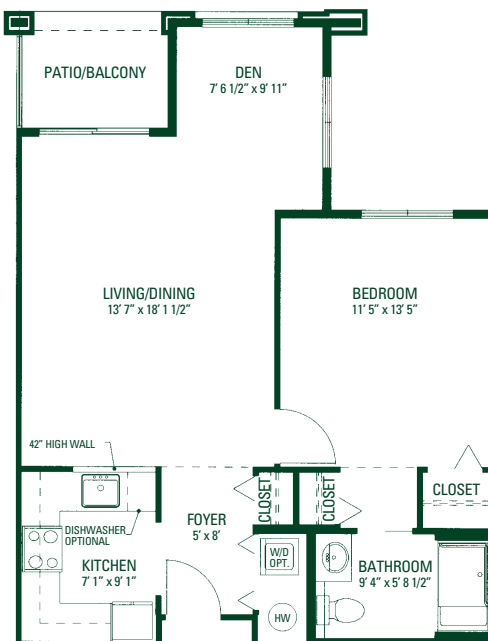
The Melville - 514 sq. ft.



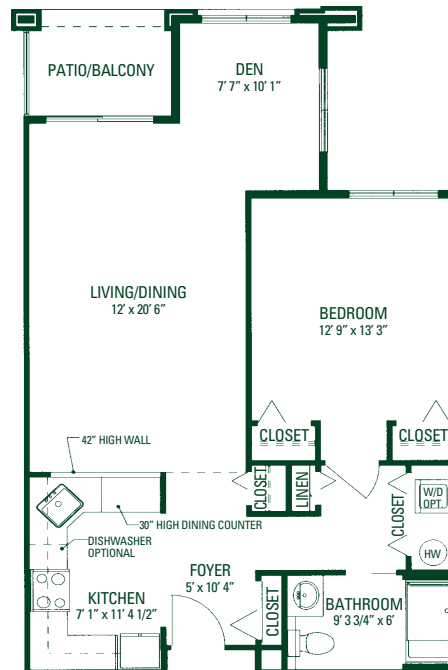
The Van Allen - 607 sq. ft.



Schuyler I - 731 sq. ft.

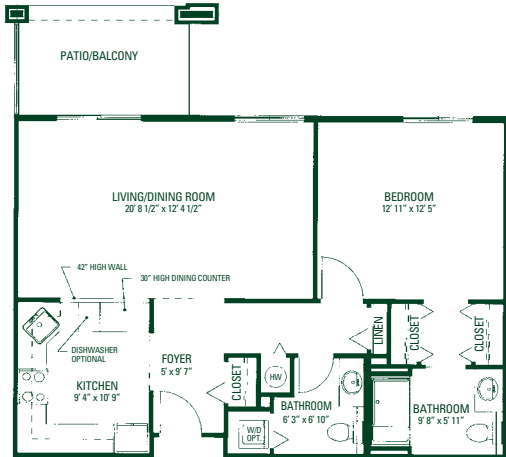


Schuyler II - 815 sq. ft.

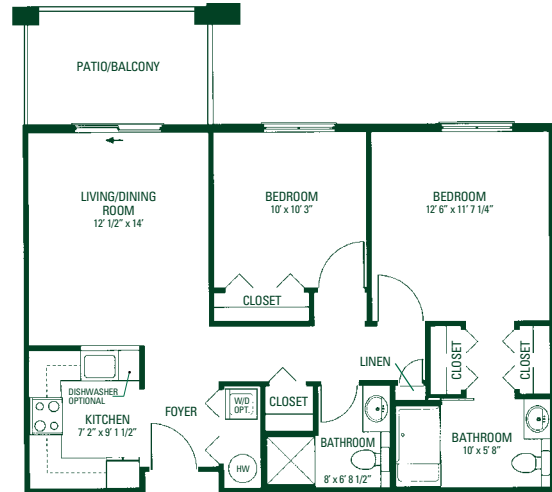




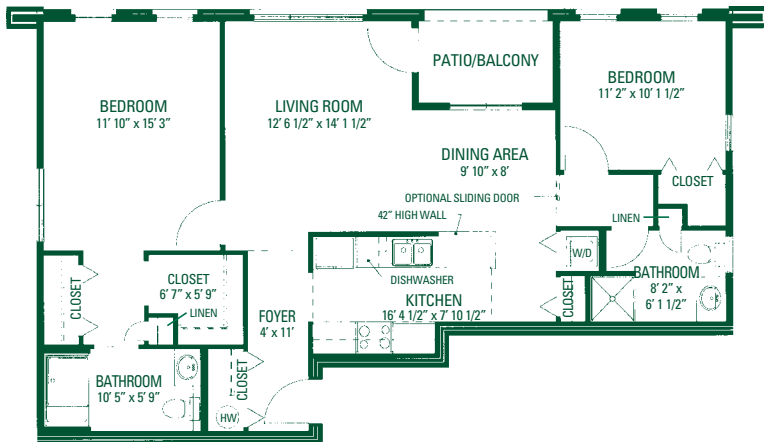
The Stuyvesant II - 829 sq. ft.



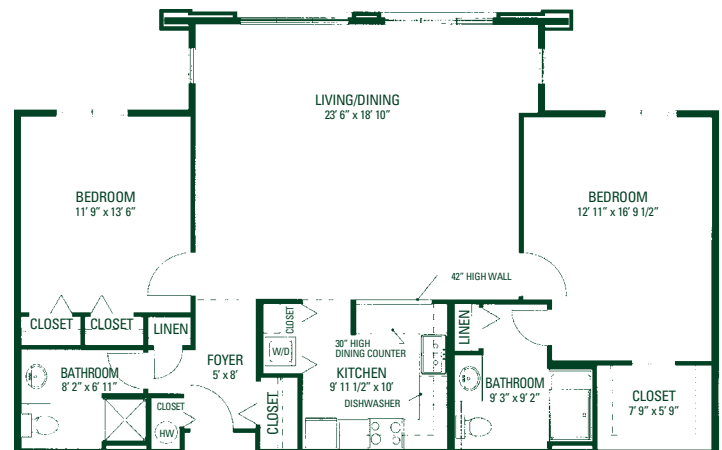
The Stuyvesant I - 845 sq. ft.



Ten Eyck I - 1093 sq. ft.

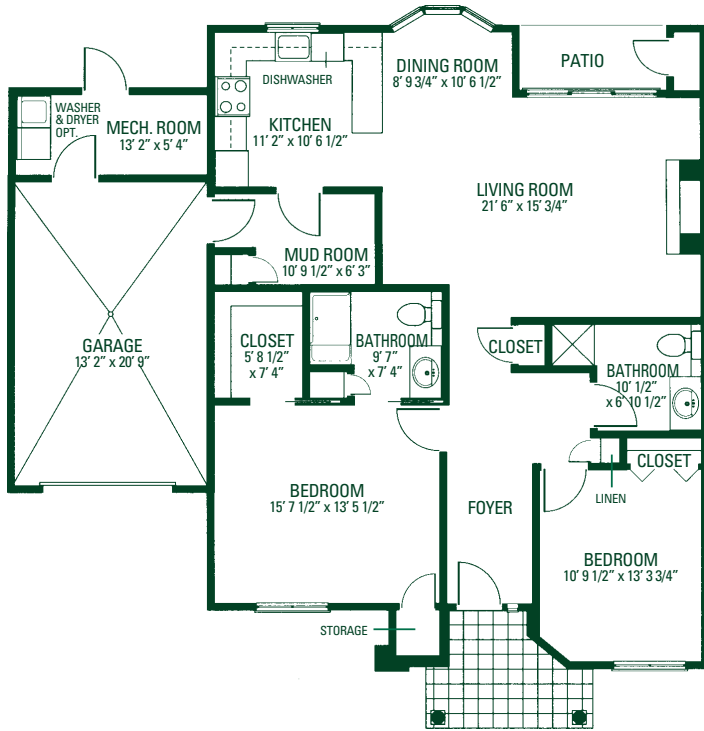


Ten Eyck II - 1300 sq. ft.

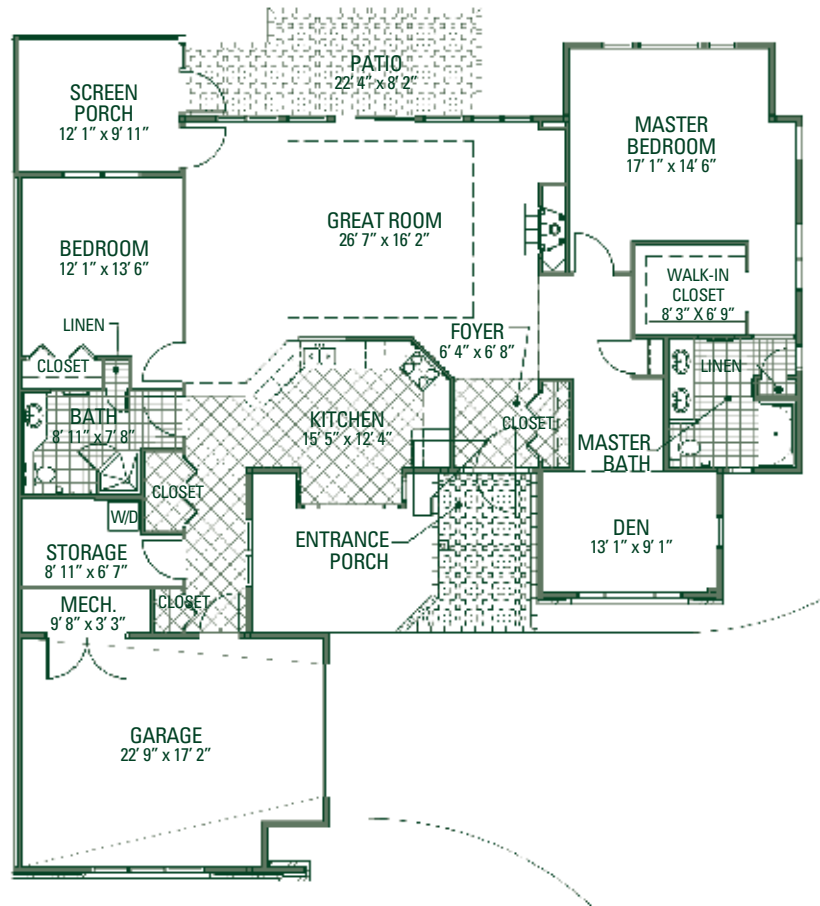




Cottage - 1661 to 1824 sq. ft.



Deluxe Cottage - 2079 sq. ft.



# Compare Your Present Living Costs with Beverwyck Independent Living

	Your Current Monthly Expenses	Monthly Service Fee
Monthly Mortgage or Rent	\$ _____	\$ _____
Building Insurance	_____	Included
Property Tax	_____	Included
Heat**	_____	Included
Electricity**	_____	Included
Sewer & Water Fees	_____	Included
Recycling/ Refuse Removal	_____	Included
Snow Removal/Yard Care	_____	Included
Scheduled Housekeeping	_____	Included
Home Maintenance	_____	Included
24-hour Security Services	_____	Included
Transportation	_____	Included
Local & Long Distance Telephone Service	_____	Included
Cable TV	_____	Included
High Speed Internet	_____	Included
Grocery/Dining Out	_____	Included*
Wellness Program	_____	Included
Personal Trainer/Nutrition Counselor	_____	Included
On-site Parking	_____	Included
Office Center (copier, fax, shredder)	_____	Included
On-site Storage	_____	Included
Smoke Detectors & Sprinkler System	_____	Included
Social & Cultural Events	_____	Included
Fitness Membership	_____	Included
Totals	\$ _____	\$ _____

\*One meal daily in the dining room included / casual dining options available

\*\*Heat and Electricity not included in Cottages' Monthly Service Fee



# The Terrace at Beverwyck

## *Comfort in a Helping Hand*

Sometimes you need a little help with things people often take for granted. At Beverwyck, we call this enriched living – additional support with TLC – and, in the Capital Region, nobody provides it better than The Terrace at Beverwyck. From help with bathing, dressing and medication assistance for your loved one, The Terrace offers you the assurance of personalized care in a warm, friendly atmosphere designed to meet your changing needs.

The greatest comfort for residents of Beverwyck is being a part of the Eddy Senior Living and St. Peter's Health Partners family – a close-knit community that genuinely cares.





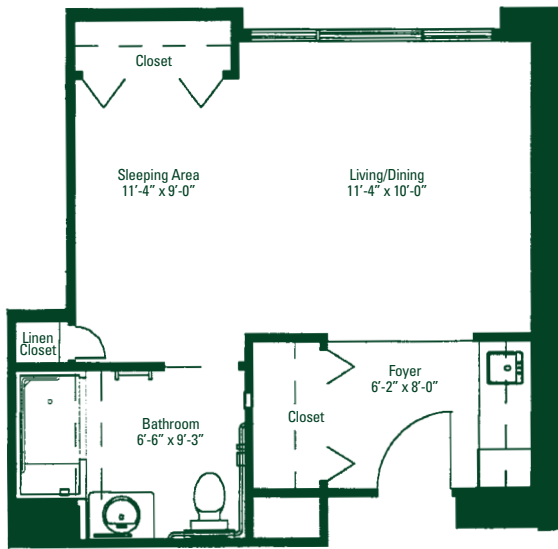
### *Services & Amenities:*

- Three chef-prepared meals served daily
- Assistance with daily activities, such as bathing and dressing
- Medication Assistance
- 24-hour security & emergency call system
- Licensed nursing staff & resident care assistants
- Daily resident safety checks, bed-making & trash removal
- Scheduled transportation
- Social activities, cultural, recreational & educational programs
- Exercise & wellness program
- Housekeeping, laundry & linen services weekly
- Residence & grounds maintenance
- Utilities (water, heat, electric and air conditioning)
- Digital cable, local & long distance telephone, & wireless internet
- A variety of attractively designed private one and two bedroom residences
- Beautifully landscaped grounds & courtyards with raised gardens
- Tastefully decorated dining room & activities centers, common areas, library, living rooms
- Gift shop for light snacks & sundries
- Full-service beauty/barber shop
- Religious services

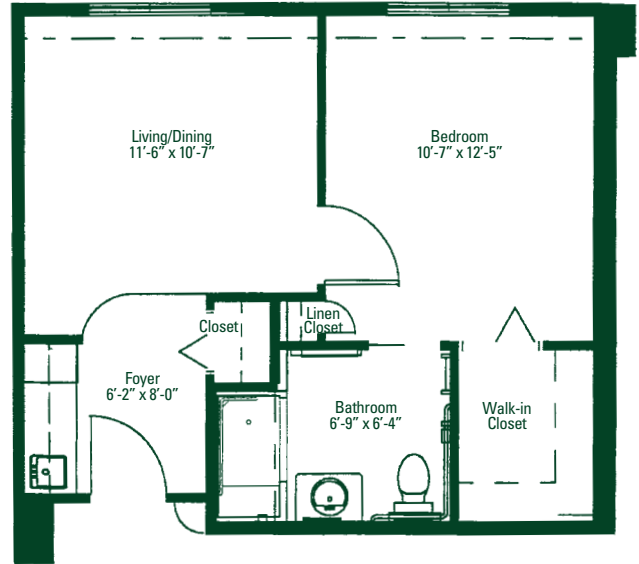


# Floorplans

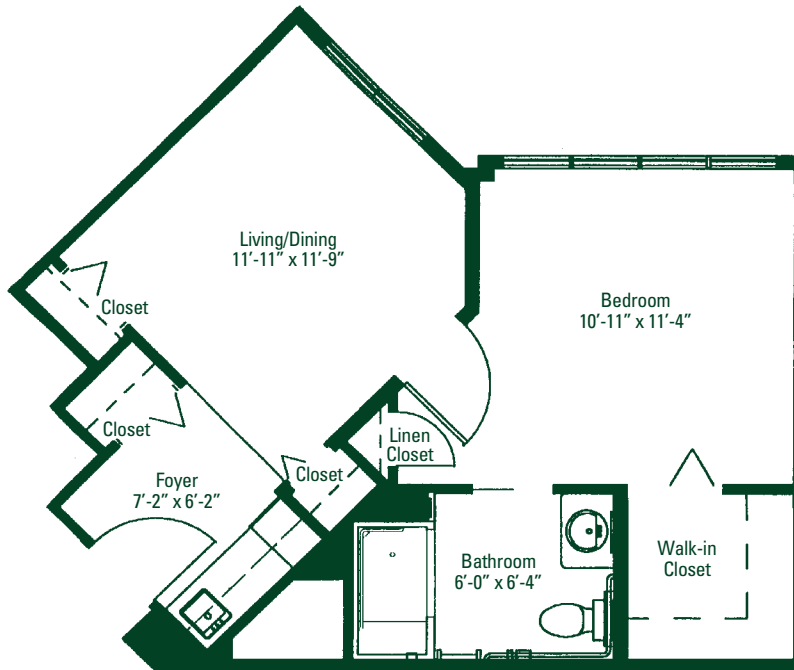
The Tulip - 359 sq. ft.



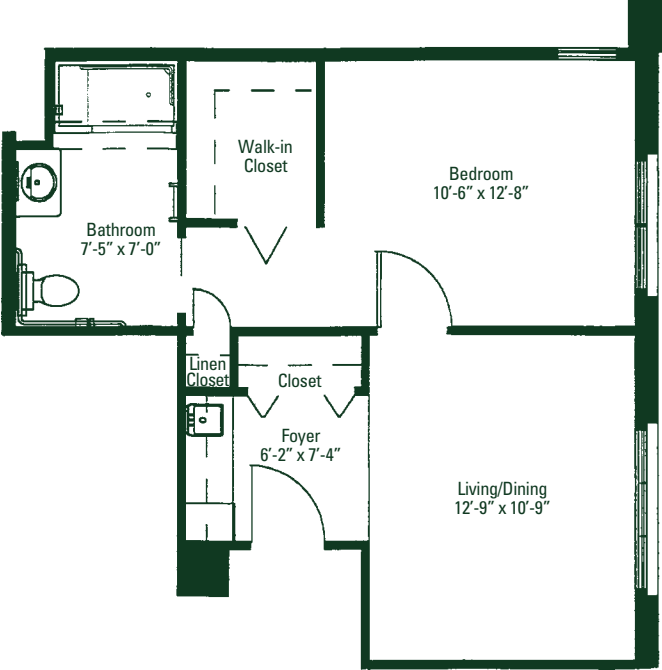
The Iris - 424 sq. ft.



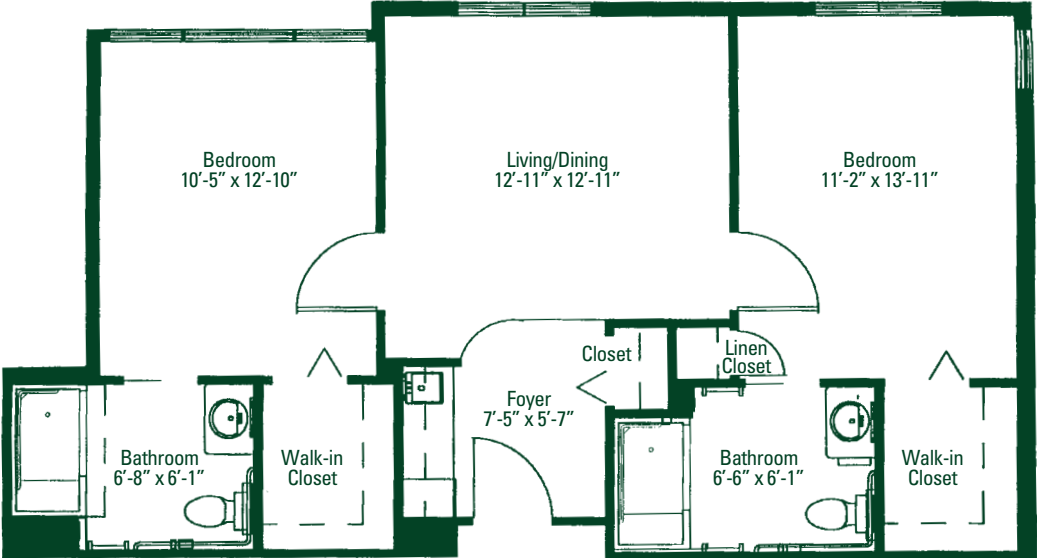
The Lilac - 470 sq. ft.



The Dahlia - 462 sq. ft.



The Aster - 706 sq. ft.



# Compare Your Present Living Costs with The Terrace Enriched Housing

	Your Current Monthly Expenses	Monthly Service Fee
Monthly Mortgage or Rent	\$ _____	\$ _____
Building Insurance	_____	Included
Property Tax	_____	Included
Heat	_____	Included
Electricity	_____	Included
Sewer and Water Fees	_____	Included
Recycling/ Refuse Removal	_____	Included
Snow Removal/Yard Care	_____	Included
Scheduled Housekeeping	_____	Included
Home Maintenance	_____	Included
24-hour Security Services	_____	Included
Transportation	_____	Included
Local Telephone Service	_____	Included
Long Distance Telephone Service	_____	Included
Cable TV	_____	Included
High Speed Internet	_____	Included
Grocery/Dining Out	_____	Included
Emergency Call System	_____	Included
Professional Health Aids	_____	Included
Medication Assistance	_____	Included
On-site Parking	_____	Included
Smoke Detectors & Sprinkler System	_____	Included
Social & Cultural Activities	_____	Included
Totals	\$ _____	\$ _____

