

# GLEN EDDY

The place to be for  
Exceptional Senior Living.



# Welcome to Glen Eddy

*It's our pleasure to introduce you to our exceptional community and to serve you in any way we can.*



We hope you find the enclosed materials helpful in understanding all the quality options Glen Eddy offers. It is an exceptional place for you and your loved ones to explore! We're confident that you will find the people and services to be the best complement to your lifestyle. And, more importantly, with the abundance of services and activities we offer, plus the additional care available on site, you'll have peace of mind for the future.

As you review the enclosed information, please call us if you have any questions or to schedule a personal tour. Experience the difference Glen Eddy can make in your life!

[www.GlenEddy.com](http://www.GlenEddy.com) | 518-280-8000



# The Glen Eddy Lifestyle



## *Fulfilling Beyond Compare*

At Glen Eddy, you are our top priority – your physical, emotional, intellectual, social and spiritual well-being is our focus every day. Maintenance-free residences give you the freedom to engage in the activities you choose. Social opportunities encourage fun, fellowship, and supportive connections with neighbors and staff. Cultural and educational programming keeps you learning and growing beyond measure. And, variety adds more spice to life with chef-prepared meals to delight your culinary desires. Take advantage of ample opportunities to stay fit, challenged, healthy, and strong. Knowing a caring hand is always close by if you need it – when you need it – gives you unsurpassed peace of mind to fully enjoy each day.

*The opportunity is yours. Embrace it.*

[www.GlenEddy.com](http://www.GlenEddy.com) | 518-280-8000



# Independent Living at Glen Eddy

*Peace of Mind to Live. Opportunities to Grow.*

When was the last time you were truly carefree? When you didn't have to worry about pipes bursting or a roof needing repairs... didn't have to make time for mowing the yard or paying all of those bills? Do you worry about what to do when the weather is bad and you can't get out for groceries? Or worse, who will help if you slip and hurt your back? At Glen Eddy, you won't have to worry about home upkeep, nor the what-ifs and unknowns again.

All of our apartments and cottage homes are maintenance-free and rich with the services and amenities you require for graceful aging. Concierge services and a complete offering of the options you desire empower you to lead a life of greater fulfillment, convenience, and independence. Glen Eddy's convenient location on 35 tranquil acres in Niskayuna, keeps you close to all the things you love about Schenectady County – premier dining, shopping, and entertainment – just minutes from your door.



### *Services:*

- Concierge services
- 24-hour security
- Interior and exterior maintenance of residences, grounds, and parking areas – including trash & snow removal
- Housekeeping services plus semi-annual spring and fall cleaning
- Utilities including electric, water, and heat/air conditioning
- Regularly scheduled transportation
- Digital cable, local & long distance telephone
- Wireless internet
- Complimentary E-reader and training
- Personal Glen Eddy email account and access to our Resident portal for the latest Glen Eddy news, menus, and events
- 24-hour emergency call system
- Smoke detectors & sprinkler system
- Extensive calendar of social, cultural, and spiritual events & activities
- Innovative programming and intellectually-stimulating activities including gaming and brain fitness systems
- Full-time resident service advisor, your liaison for any outside services or resources that you may need

### *Amenities:*

- Various gathering & activities areas throughout
- Fireside lounge with private beverage lockers
- Library with extensive reading selection
- Business Center with computers and copier
- Fitness Center and indoor pool & spa
- Creative arts center and art gallery
- On-site storage
- Private meeting rooms
- Guest suite
- Landscaped & manicured grounds
- Putting green
- Vegetable & flower gardens
- Walking routes through the campus
- Full-service beauty salon & barber shop
- Sundries & snacks shop
- Hobby & woodworking shop



### *Signature Wellness Program:*

- EmpowerU Nutrition & Wellness Connection
- Robust selection of land and aquatic exercise classes
- Nutrition education classes
- Personal fitness counseling and training sessions
- Fitness programs focused on balance/agility, strength, flexibility, and cardio endurance
- Specialty classes including Yoga and Tai Chi
- Wellness Center with complete offering of fitness equipment to accommodate any skill set and strength level

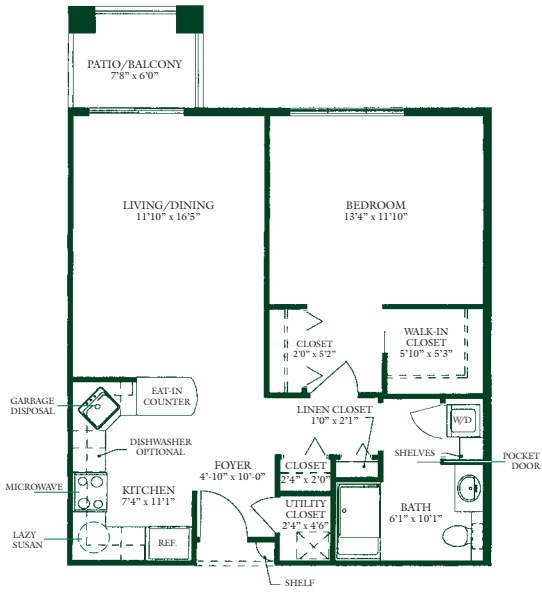
### *Dining Services*

- Chef-prepared meals served in our formal, casual, and private dining venues
- Friendly service staff provide enjoyable dining experiences
- Van Curler dining room, serving dinner daily in an elegant setting
- Casual dining alternative offering everything from coffee and pastries, to a lighter menu of lunches and dinners
- Outdoor dining
- Private dining spaces available for special occasions or group dinners
- Catering services
- Take-out services available
- Themed seasonal menus
- “Hydration Stations” throughout the campus
- A commitment to Platinum Service®

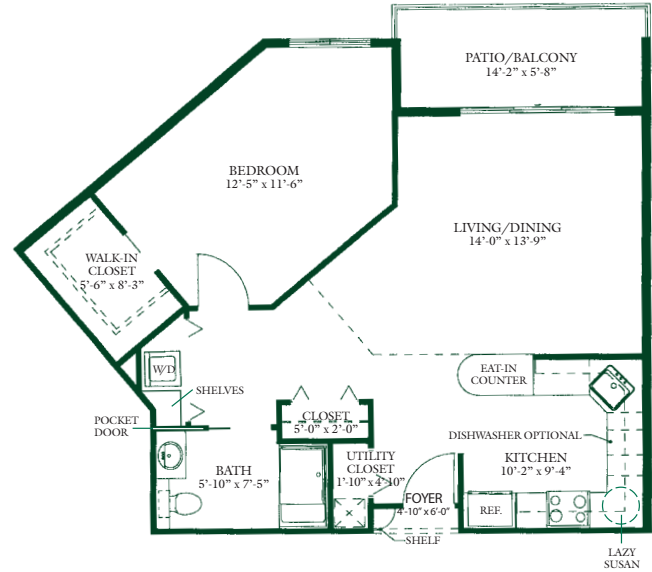


# Floorplans

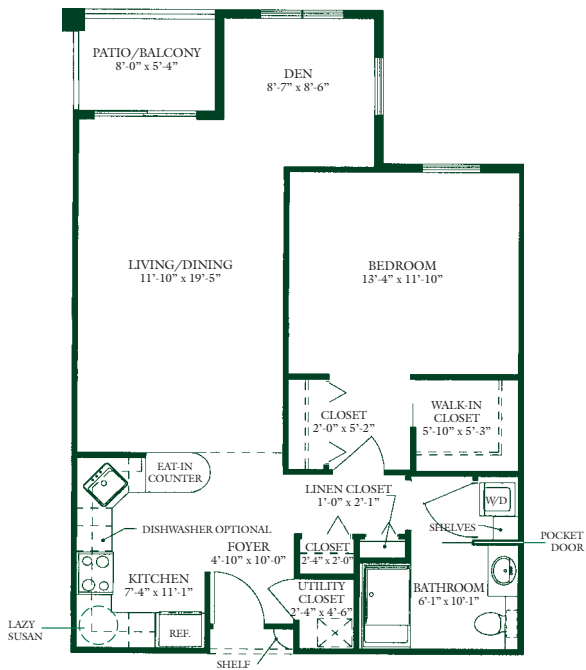
The Ascot I - 716 sq. ft.



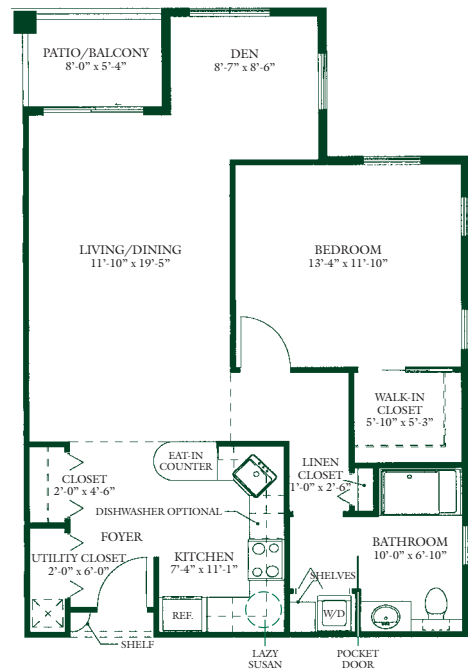
The Ashton - 770 sq. ft.



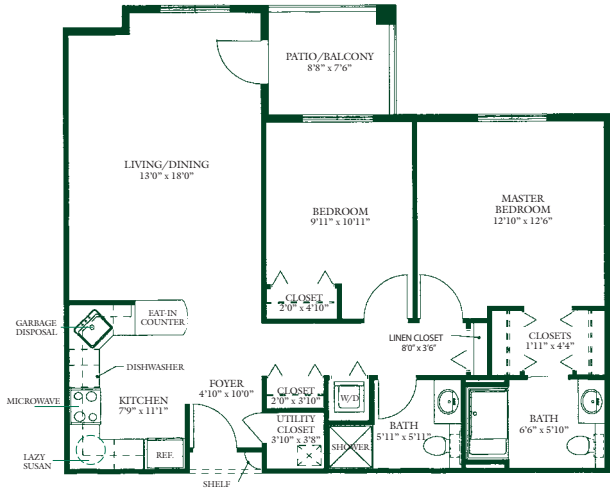
The Bradford I - 820 sq. ft.



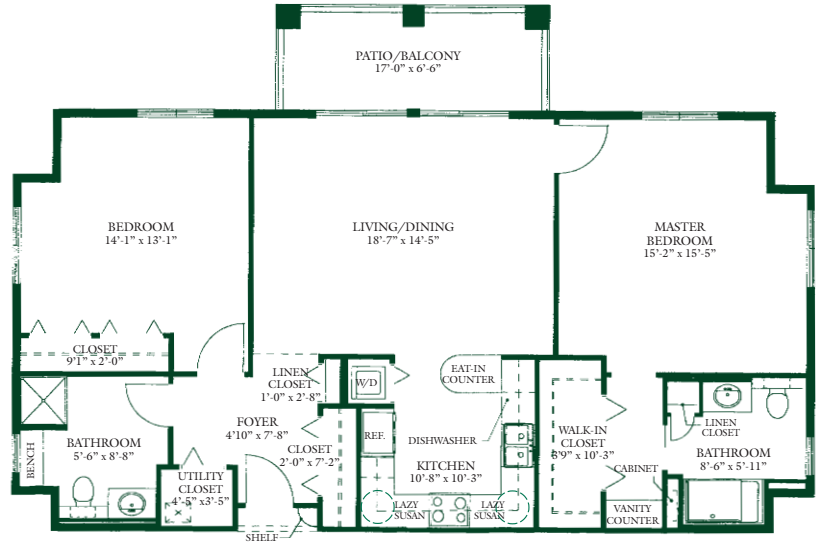
The Bradford II - 825 sq. ft.



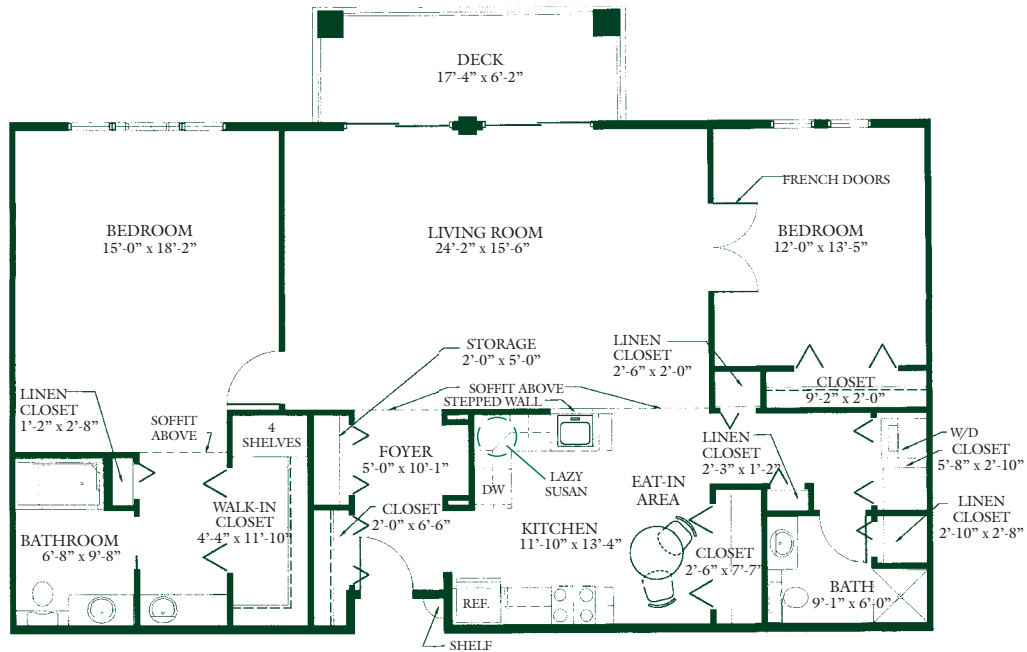
The Stratford - 954 sq. ft.



The Woodfield - 1189 sq. ft.

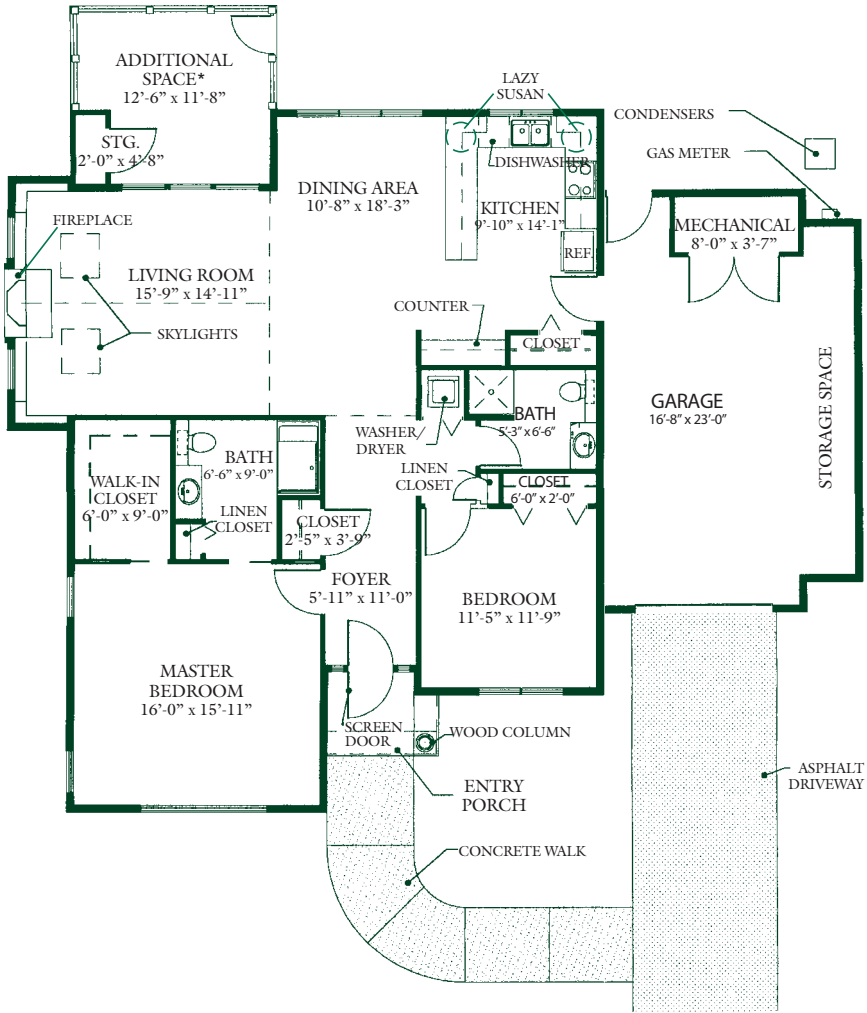


The Framingham - 1448 sq. ft.

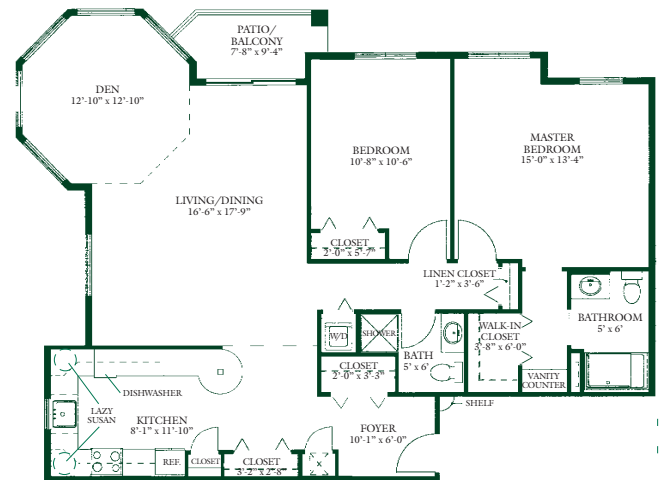




## The Wellington Cottage - 1870 sq. ft.



## The Edmonton - 1282 sq. ft.



# Compare Your Present Living Costs with Glen Eddy Independent Living

	Your Current Monthly Expenses	Monthly Service Fee
Monthly Mortgage or Rent	\$ _____	\$ _____
Building Insurance	_____	Included
School Taxes	_____	Included
Property Taxes	_____	Included
Heat	_____	Included
Electricity & Gas	_____	Included
Water & Sewer Fees	_____	Included
Trash Removal	_____	Included
Snow Removal	_____	Included
Yard Care	_____	Included
Unexpected Expenses (furnace, roof, etc.)	_____	Included
Scheduled Housekeeping	_____	Included
Exterior Maintenance (windows, deck, gutters, etc.)	_____	Included
Appliance Repair & Maintenance	_____	Included
24-hour Security Services	_____	Included
Smoke Detectors & Sprinkler System	_____	Included
Transportation/Car	_____	Included
Telephone (local & long distance)	_____	Included
Cable TV	_____	Included
High Speed Internet	_____	Included
Grocery/Dining Out	_____	Included
Health Club/Pool Membership	_____	Included
Wellness Program	_____	Included
Planned Activities & Entertainment	_____	Included
Life-long Learning Programs	_____	Included
On Site Library/Office Center	_____	Included
Peace of Mind	_____	Priceless
Totals	\$ _____	\$ _____



# The Terrace at Glen Eddy

## *Comfort in a Helping Hand.*

Sometimes you need a little help with doing the things people often take for granted. At Glen Eddy, we call this Enriched Housing – additional support with TLC – and, in the Niskayuna area, nobody provides it better than The Terrace at Glen Eddy. From help with the things you need to make life a little easier- like bathing, getting dressed, or taking medications correctly- to around-the-clock care and support, The Terrace offers you the assurance of personalized care in a warm, friendly atmosphere designed to meet changing needs.

The greatest comfort for residents of Glen Eddy is being a part of the Eddy Senior Living and St. Peter's Health Partners family – a close-knit community that genuinely cares.



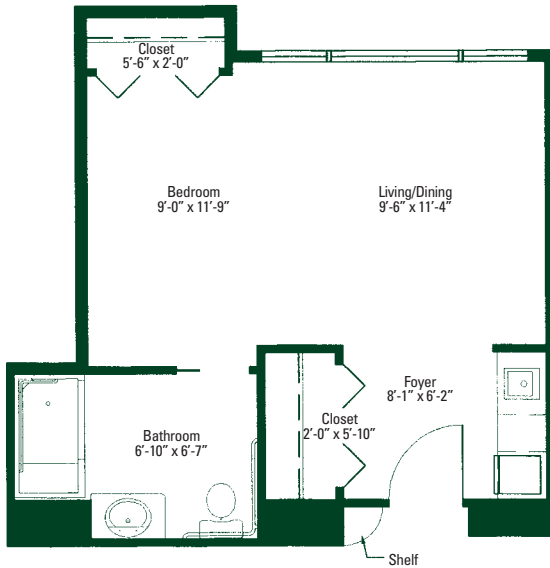


### *Services & Amenities:*

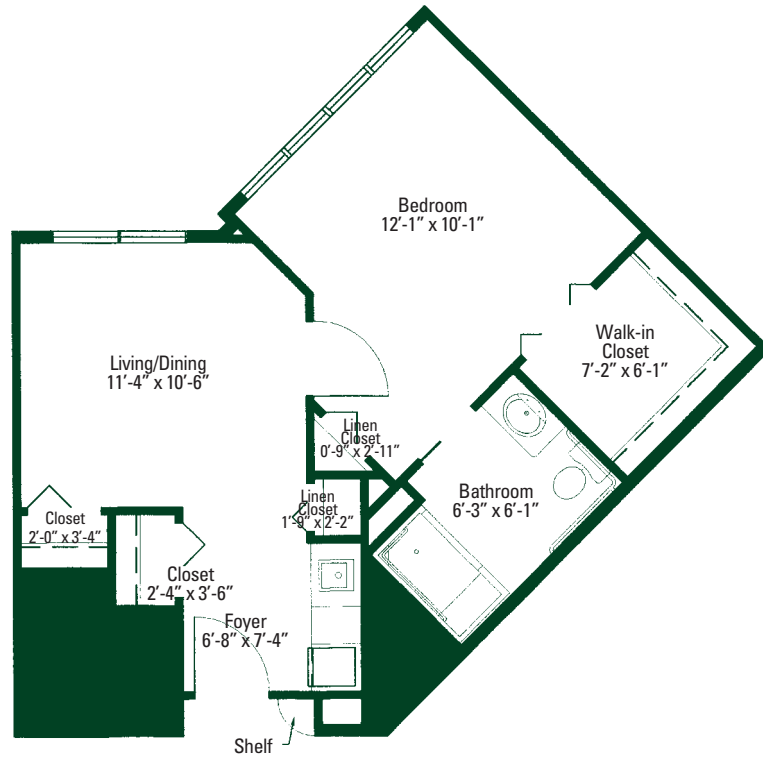
- Three balanced and nutritious meals daily
- Assistance with daily life activities, such as bathing, getting dressed, and medication management
- Licensed nursing staff and 24-hour resident care assistants
- Regular health and wellness assessments; case management
- Resident Service Advisor Program
- On-site physician, psychological and podiatry services
- 24-hour security staff and emergency call system
- Daily resident safety checks
- Bed making, touchup cleaning, and trash removal
- Social activities, cultural, recreational, and educational programs
- Scheduled transportation
- Housekeeping, laundry, and linen services
- Residence and grounds maintenance
- Digital cable, local and long distance telephone, wireless internet access
- Well-designed private one and two-bedroom apartments
- Beautifully landscaped grounds and courtyards
- Tastefully decorated common areas, including library, living room, dining room, activities center
- Country Store/coffee shop for light snacks and sundries
- Full-service beauty/barber shop

# Floorplans

The Greenwich - 356 sq. ft.



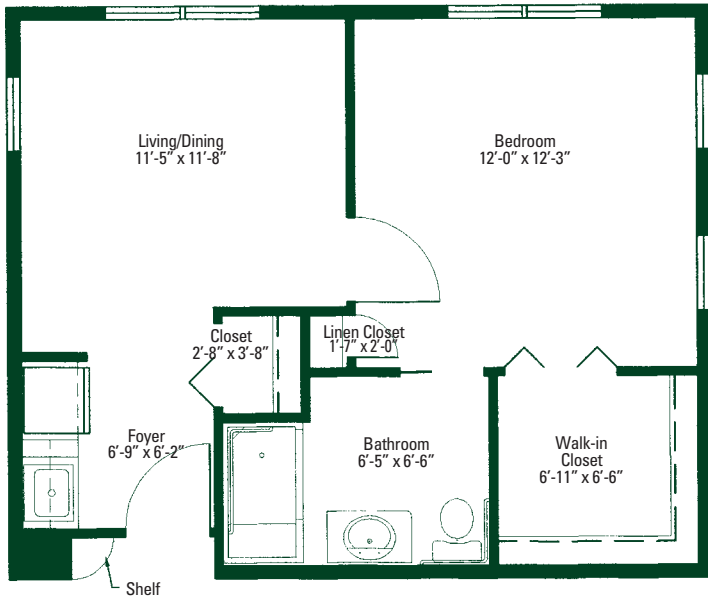
The Huntington - 456 sq. ft.



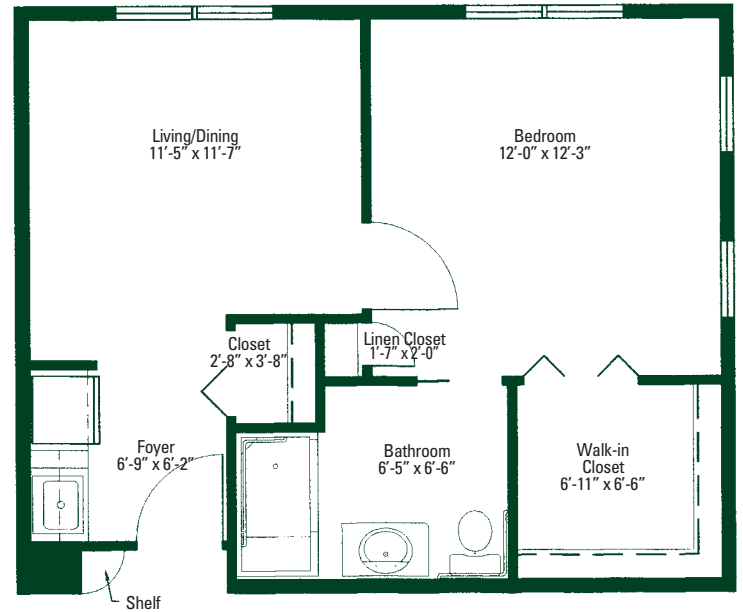
The Kensington - 474 sq. ft.



The Johnston- 446 sq. ft.



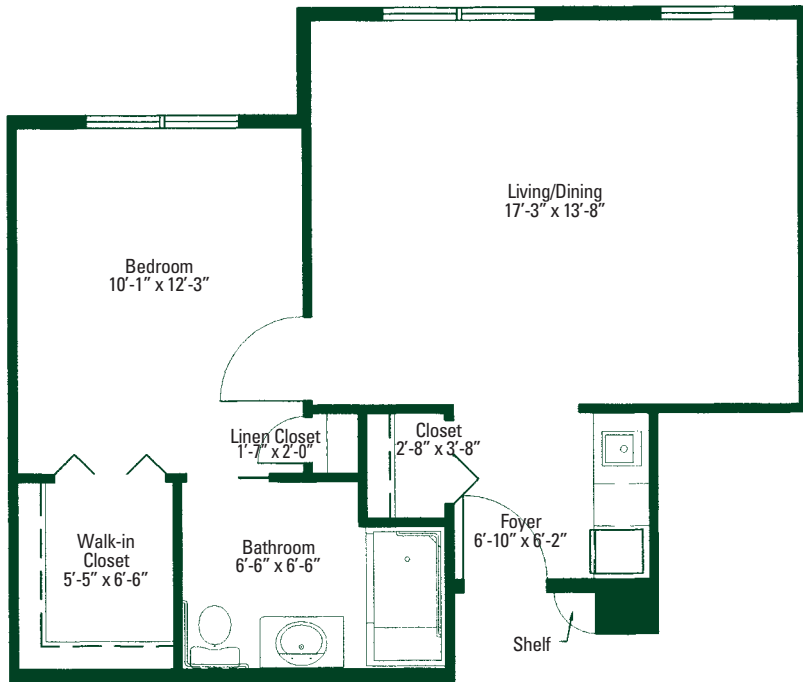
The Iverness - 446 sq. ft.



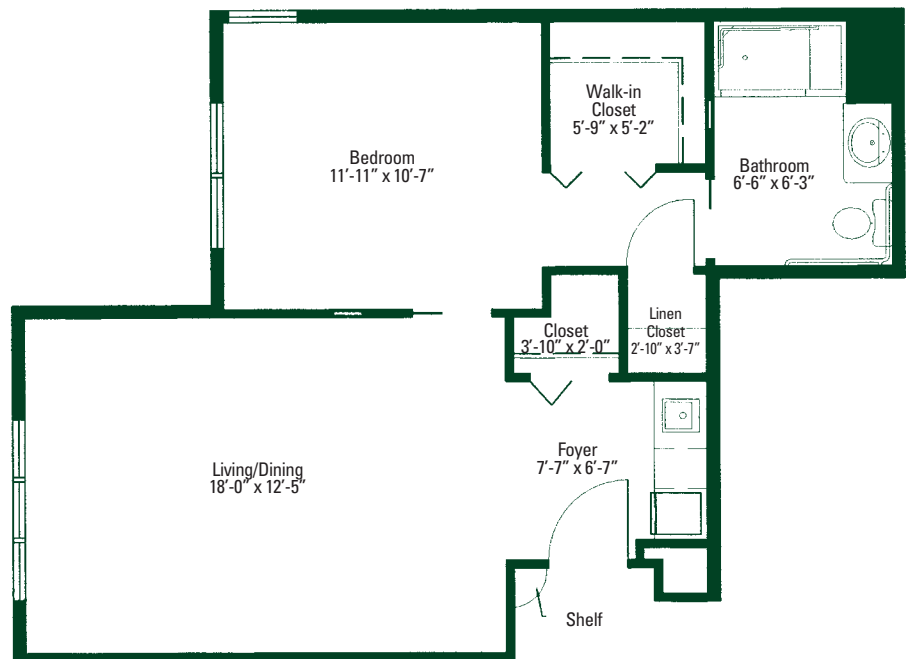
The Lancaster - 452 sq. ft.



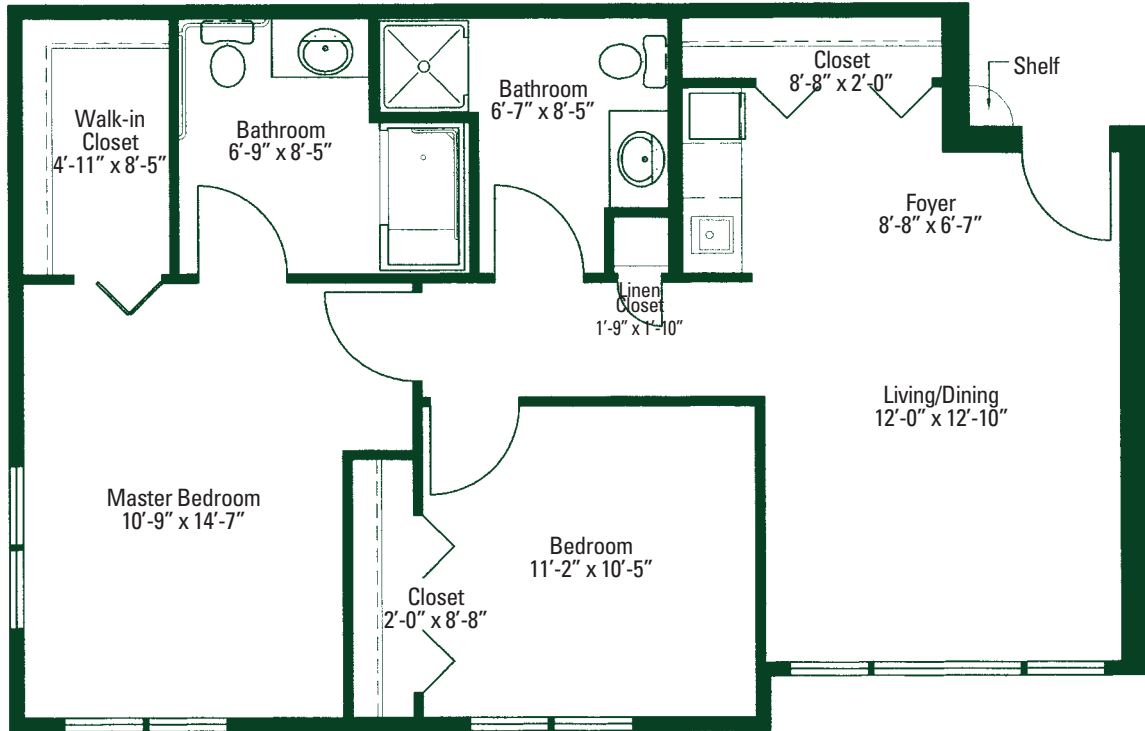
The Manchester - 525 sq. ft.



The Newham - 561 sq. ft.



The Oxford - 816 sq. ft.





# Compare Your Present Living Costs with The Terrace Enriched Housing

	Your Current Monthly Expenses	Monthly Service Fee
Monthly Mortgage or Rent	\$ _____	\$ _____
Building Insurance	_____	Included
School Taxes	_____	Included
Property Taxes	_____	Included
Heat	_____	Included
Electricity & Gas	_____	Included
Water & Sewer Fees	_____	Included
Trash Removal	_____	Included
Snow Removal	_____	Included
Yard Care	_____	Included
Unexpected Expenses (furnace, roof, etc.)	_____	Included
Scheduled Housekeeping	_____	Included
Exterior Maintenance (windows, deck, gutters, etc.)	_____	Included
Appliance Repair & Maintenance	_____	Included
24-hour Security Services	_____	Included
Smoke Detectors & Sprinkler System	_____	Included
Transportation/Car	_____	Included
Telephone (local & long distance)	_____	Included
Cable TV	_____	Included
High Speed Internet	_____	Included
Grocery/Dining Out	_____	Included
Health Club/Pool Membership	_____	Included
Wellness Program	_____	Included
Planned Activities & Entertainment	_____	Included
Life-long Learning Programs	_____	Included
On Site Library/Office Center	_____	Included
Peace of Mind	_____	Priceless
Totals	\$ _____	\$ _____

