



# BEECHWOOD AND THE TERRACE AT EDDY MEMORIAL

*The area's first full continuum of care campus*







**“ Moving forward means not standing still. Beechwood empowers you to learn and grow in a community that prioritizes a quality lifestyle.”**



“My children have enough going on. They don’t have to worry now. I’m having fun... and, I am taking care of me.”



*Learn why Beechwood at Eddy Memorial is smart for you.*

*Planning ahead provides greater opportunities and rewards.*

## BE FUTURE SAVVY.

**The first retirement community in Upstate New York, Beechwood at Eddy Memorial has delivered quality services to seniors and loved ones since 1985. And it keeps getting better with age.**

“Beechwood just makes sense.” We hear this time and again. That’s because it was designed for people like you, who’ve made a lot of smart decisions in their lives and are ready to start living the carefree retirement they planned... with confidence in the future. You’ll find what matters most to you – your freedom, independence, health, security, and peace of mind – is our priority at Beechwood at Eddy Memorial. From beautiful residences to a full continuum of health and wellness services on-site, you’ll discover comfort and convenience in a close-knit community, all right here in Troy.







*Move ahead with certainty*

## LIVE LIFE WELL.

**“Freedom, friendship, fun ...  
a plan that keeps me in  
control. These things never  
get old at Beechwood.”**

Retirement should be a time for renewal and rediscovery. At Beechwood at Eddy Memorial, it is. Our team takes care of everything from housekeeping and maintenance to chef-prepared meals and professionally-developed programming to keep you physically, intellectually and socially engaged. Should the time come when additional help is needed, onsite Enriched Housing and skilled nursing is available through Eddy Senior Living and St. Peter's Health Partners, long-respected leaders in quality care.

Take a class on local history. Attend a lecture on healthy aging. Brush up on your watercolor painting or connect with friends over dinner or a game of Bridge. Whatever your passion is, and whatever your goals are, at Beechwood we provide the freedom, opportunities, resources and encouragement for you to live the life you planned. Our convenient location keeps you close to everything in Troy. And on-site amenities include a library, wellness programming, beauty salon, and wide variety of social and continuing education opportunities, all outside your door.





# Welcome to Beechwood and the Terrace at Eddy Memorial

*Congratulations on  
taking the next step to  
plan ahead for  
your future!*



We hope you find the enclosed materials a valuable reminder of all the benefits of life at Beechwood and The Terrace at Eddy Memorial and why it could be one of the smartest decisions you ever make. It is a pleasure to introduce you to our extraordinary community – the area's first to offer a full continuum of care on site. It's our goal to help you understand your options and guide you on the journey to a more fulfilling, secure retirement.

As you review the information, please let us know if you have any questions that we can answer. Or, call to schedule a time to visit and get more acquainted with with our close-knit community of friendly neighbors.

[TerraceatEddyMemorial.com](http://TerraceatEddyMemorial.com) | [BeechwoodSeniorLiving.com](http://BeechwoodSeniorLiving.com)  
(518) 271-5950





# Beechwood: An Eddy Senior Living Community



## *Happiness. Wellness. Peace of Mind.*

As an Eddy Senior Living community, Beechwood at Eddy Memorial offers the promise of a rewarding retirement enhanced by a full continuum of care. From independent living offered at Beechwood at Eddy Memorial to enhanced assisted living offered at The Terrace at Eddy Memorial to skilled nursing care offered at Eddy Memorial Geriatric Center all on site at the Eddy Memorial Campus in Troy, NY – in addition to a wide network of professional services available through our affiliation with St. Peter’s Health Partners – we empower you to live the life you love with added freedom, choices, confidence, and peace of mind.

## *The Terrace at Eddy Memorial*

Enhanced housing for seniors interested in personalized assistance with activities such as bathing, dressing and medication management in a warm, comfortable atmosphere. Respite care also available.

Bringing the full continuum of housing and residential care to our Eddy Memorial Campus. This center provides skilled nursing care, including “The Courtyard,” a 40-bed unit designed for residents with memory impairment.



# Beechwood: An Eddy Senior Living Community

## *The Eddy Promise*

As a resident of The Eddy communities, you can enjoy peace of mind—knowing that a full range of services and care options are provided by The Eddy and St. Peter's Health Partners. That way, if your health needs change, we have the expertise and services that can allow you to stay with a system you know... and one that knows you, too.

## *A Trusted Resource.*

The Eddy began in 1928 as a 19-bed nursing home – Eddy Memorial – that moved to what is now the Eddy Memorial Senior Living Campus in Troy, NY. Today, The Eddy is a comprehensive continuum of healthcare, supportive housing, and community services that reaches 22 counties and serves more than 40,000 people yearly – from newborns to seniors along with their families – helping to maximize quality of life, dignity, and independence.

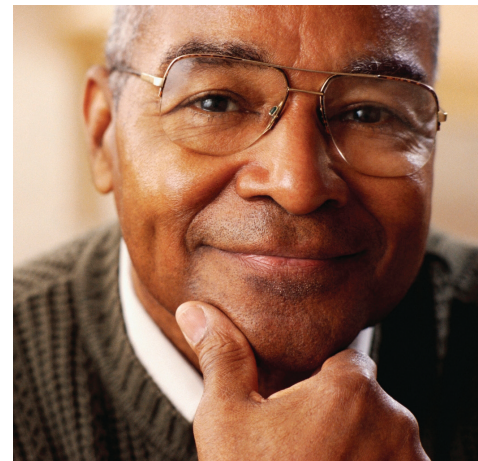
## *St. Peter's Health Partners.*

St. Peter's Health Partners (SPHP) is the region's largest health system, which is transforming the face of health care across the capital district and the surrounding communities. With nearly 12,500 employees in more than 165 locations, St. Peter's Health Partners provides high-quality, compassionate care to thousands of people every day.





# The Beechwood at Eddy Memorial Lifestyle



*There's life... And then there's LIFE at Beechwood at Eddy Memorial.*

Located in the heart of Troy, NY Beechwood at Eddy Memorial is a one-of-kind senior living co-op community — meaning our community is controlled by our shareholders (residents just like you!), and each resident gets a voice in how our community is run.

At Beechwood at Eddy Memorial, you'll find our priority is YOU: physically, emotionally, intellectually, and spiritually. Maintenance-free residences give you the time to engage in the activities you please. Social opportunities encourage fellowship and close relationships with neighbors and staff. Continuing education classes keep you learning and growing in ways you never imagined. And variety adds more spice to life – with chef-prepared meals to satiate your culinary tastes and ample opportunities to stay fit, challenged, well and strong. Plus a full continuum of care on site provides peace of mind – knowing a helping hand is always close by, if you need it.

*See for yourself, and change your outlook on the future.*

BeechwoodSeniorLiving.com | (518) 271-5950





# Independent Living at Beechwood at Eddy Memorial

## *Freedom to live, Room to grow.*

Located in the heart of Troy, NY Beechwood at Eddy Memorial is a one-of-kind senior living co-op community — meaning our community is controlled by our shareholders (residents just like you!), and each resident gets a voice in how our community is run.

Ready to trade in your mower and snow shovel for a life of greater fulfillment, convenience and independence? At Beechwood at Eddy Memorial, all of our residences are maintenance-free and provide access to a wide array of life-enriching activities and amenities right outside your door. Choose from one or two-bedroom floor plans, designed with your active lifestyle and sensible tastes in mind.



### *Services Included:*

- Interior & exterior maintenance of apartments, grounds & parking areas  
(including trash and snow removal)
- Housekeeping services plus semi-annual spring and fall cleaning
- Property taxes & utilities (water and air conditioning)
- Digital cable, local & long distance telephone, & wireless internet
- 24-hour security & emergency call system
- Smoke detectors & sprinkler system
- One meal daily in the dining room / casual dining options available
- Regularly scheduled transportation

- On-site physical and occupational therapy services available
- On-site podiatry services available
- Extensive calendar of social, cultural, spiritual & educational events and activities
- Social, cultural & volunteer activities – Artist Series, Spectrum Theatre, Albany Institute of History and Art, Sand Lake Theatre, Rockwell Museum, Clark Museum, Troy Music hall, Albany Symphony, MacHaydn Theatre, JP Cruise, Bennington Center for the Arts, Roosevelt Library, SPAC (Saratoga Performing Arts Center)





## *Signature Wellness Program:*

- Robust selection of exercise classes
- Nutrition education classes
- Personal fitness counseling & training sessions
- Fitness programs focused on balance/agility, strength, flexibility & cardio endurance
- Wellness Center with fitness equipment to accommodate various skill sets & strength levels

## *Amenities:*

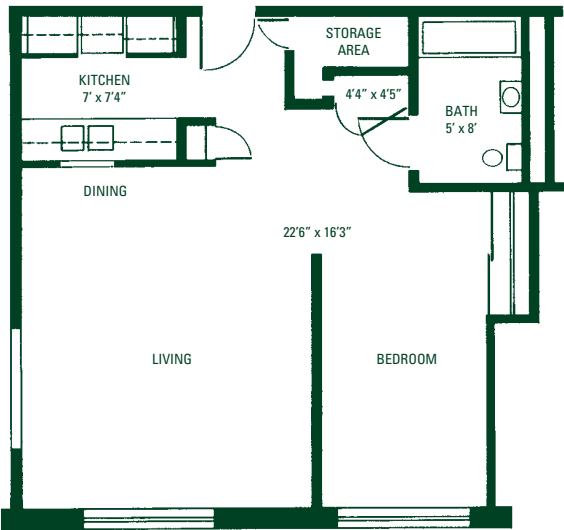
- Libraries with extensive reading selection
- On-site storage
- Private meeting rooms
- Private Guest Suites for Visitors
- Walking path
- Gift shop to Country Store
- Religious services
- Dining room
- Various gatherings and activity areas throughout
- Fireside lounge,
- Wellness Center
- Landscaped & manicured grounds
- Verandas
- Clubhouse for special events





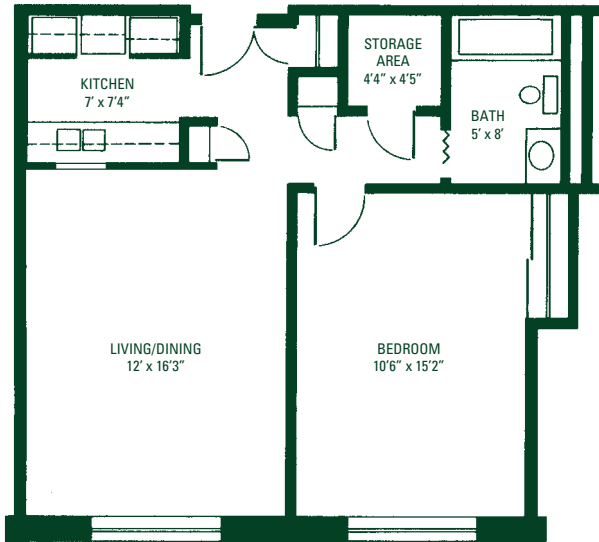
# Floorplans

The Willard - One Bedroom (A)



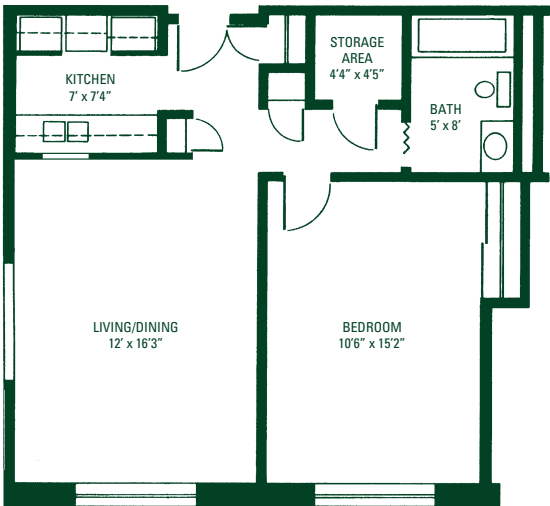
514 square feet

The Pattison - One Bedroom (B)



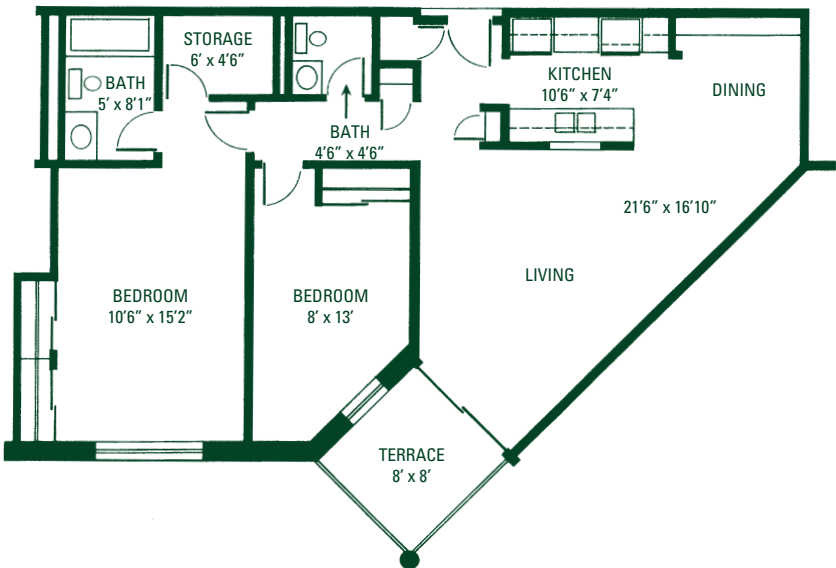
555 square feet

The Cluett - One Bedroom Corner (B)



555 square feet

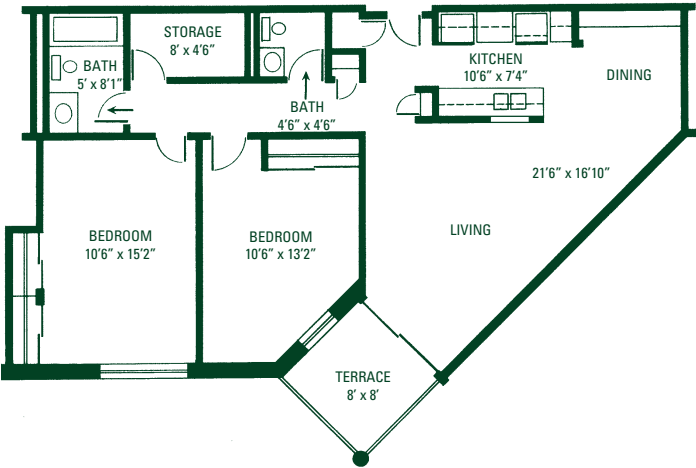
The Garfield- One Bedroom with Den (C)



807 square feet

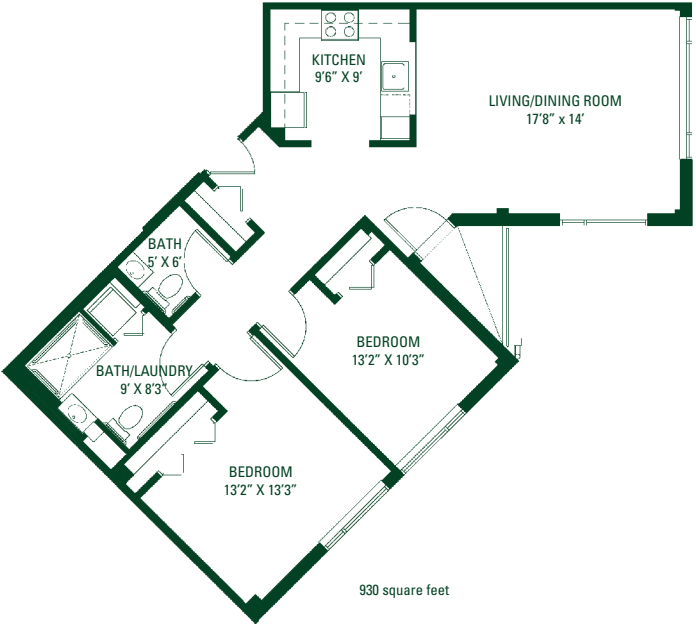


The Poestenkill - Two Bedroom (D)



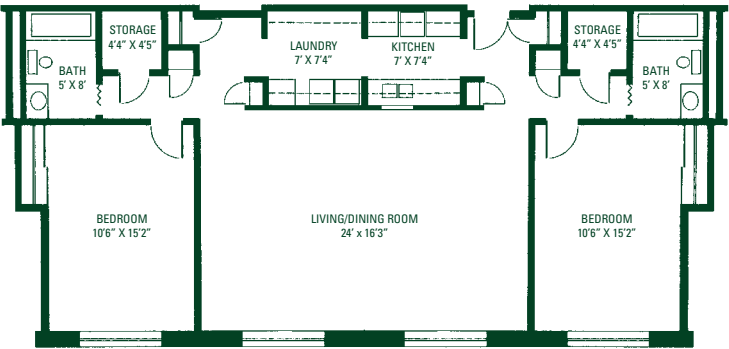
848 square feet

The Rensselaer - Two Bedroom (E)



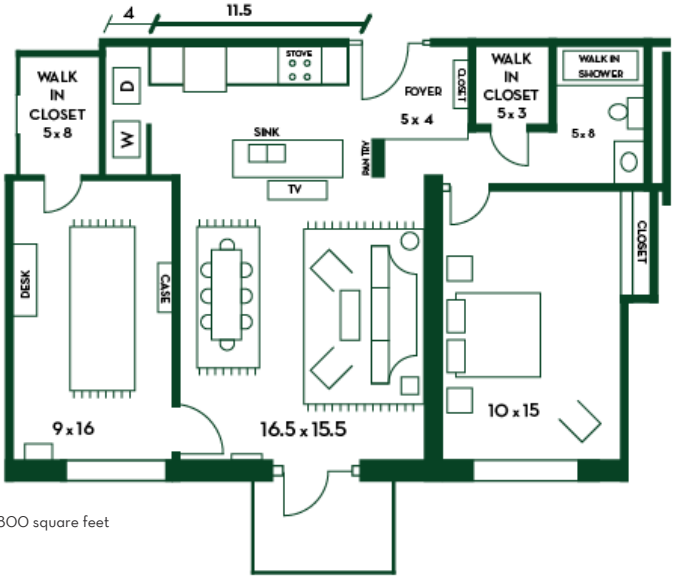
930 square feet

The Krause - Two Bedroom (F)



1,110 square feet

The Van Buren - Two Bedroom (F)



800 square feet



# The Terrace at Eddy Memorial

## *Comfort in a Helping Hand.*

Sometimes you need a little help with things people often take for granted. At The Terrace we call this enhanced assisted living – additional support with TLC – and, in Troy, nobody provides it better than The Terrace at Eddy Memorial. From help with bathing, dressing and assistance with medications, The Terrace offers you the assurance of personalized care in a warm, friendly atmosphere designed to meet your changing needs.

The greatest comfort for Terrace residents is being a part of Eddy Senior Living and St. Peter's Health Partners family – a close-knit community that genuinely cares.







### *Services & Amenities:*

- Three chef-prepared meals served daily
- Assistance with daily activities, such as bathing and dressing
- Assistance with medications
- 24-hour security & emergency call system
- Licensed nursing staff & resident care assistants
- Daily resident safety checks, bed-making & trash removal
- Scheduled transportation
- Social activities, cultural, recreational & educational programs
- Exercise & wellness program
- Housekeeping, laundry & linen services weekly
- Residence & grounds maintenance
- Utilities (water, electric and air conditioning)
- Digital cable, local and long distance telephone, and wireless internet
- Attractively designed private studios and one-bedroom residences

- Beautifully landscaped grounds & courtyards with raised gardens
- Tastefully decorated dining room & activities centers, common areas, library, living rooms

An enhanced level of service that also provides:

RN assessment as needed, Physical assistance with transfers and mobility, incontinence care, dressing changes, assistance with oxygen use and diabetic needs

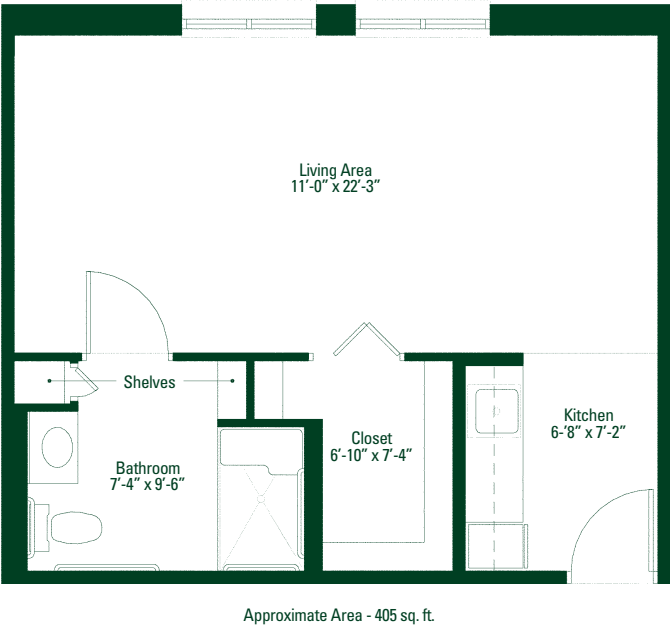
### *And an Enhanced Level of Service that also provides:*

- RN Assessment as needed
- Physical assistance with transfers and mobility
- Incontinence care
- Dressing changes
- Assistance with oxygen use and diabetic needs.

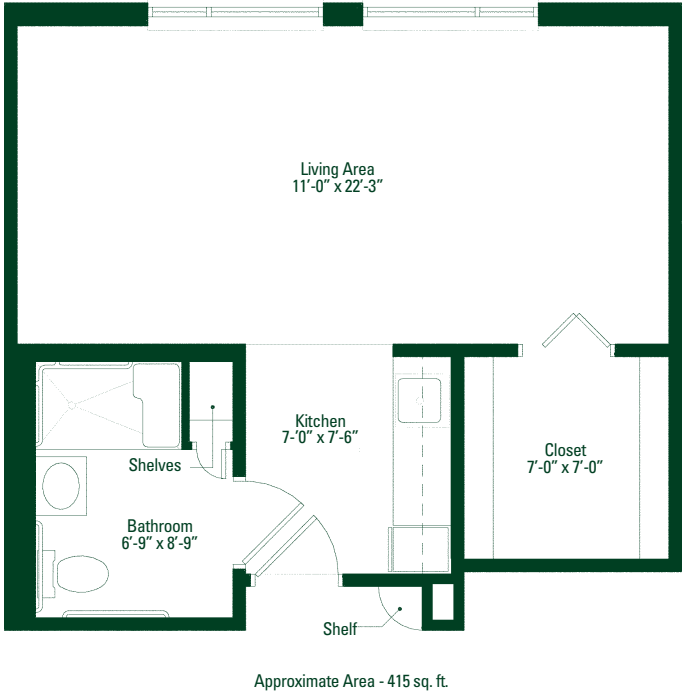


*Floorplans*

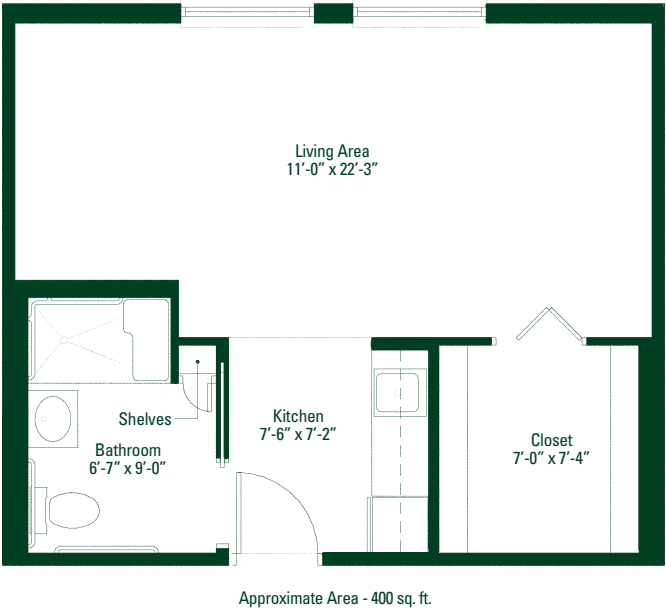
The Balsam



The Willow

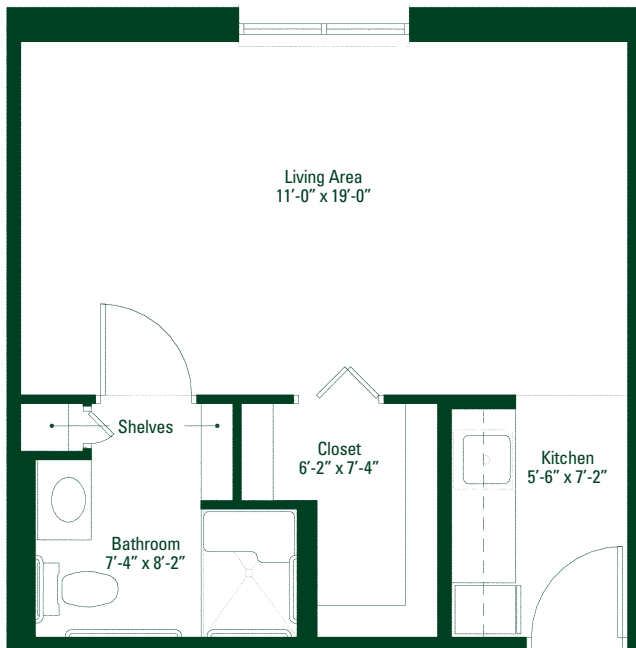


The Spruce



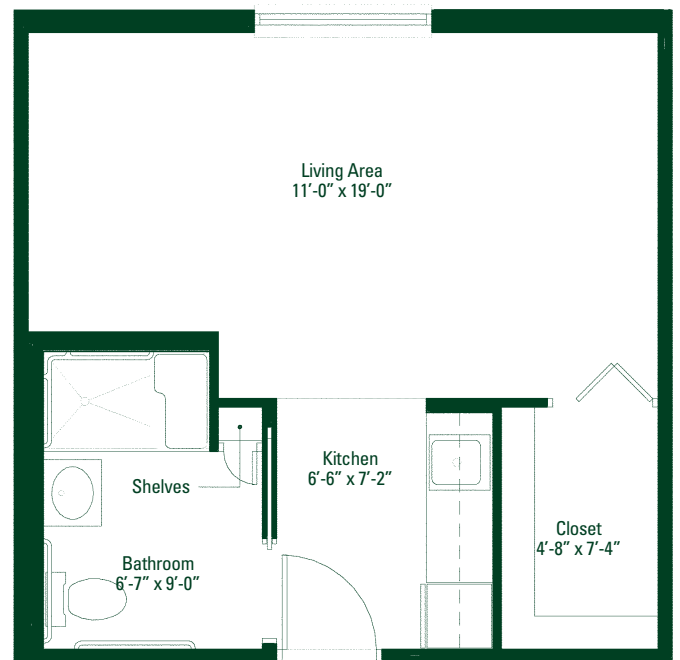


## The Birch



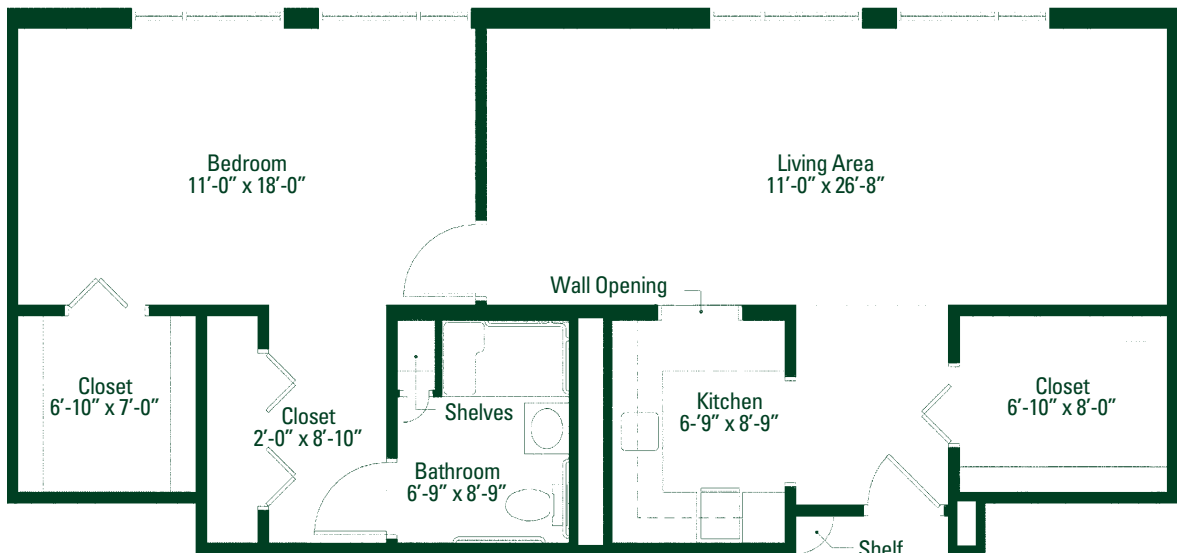
Approximate Area - 345 sq. ft.

## The Maple



Approximate Area - 340 sq. ft.

## The Oak



Approximate Area - 860 sq. ft.